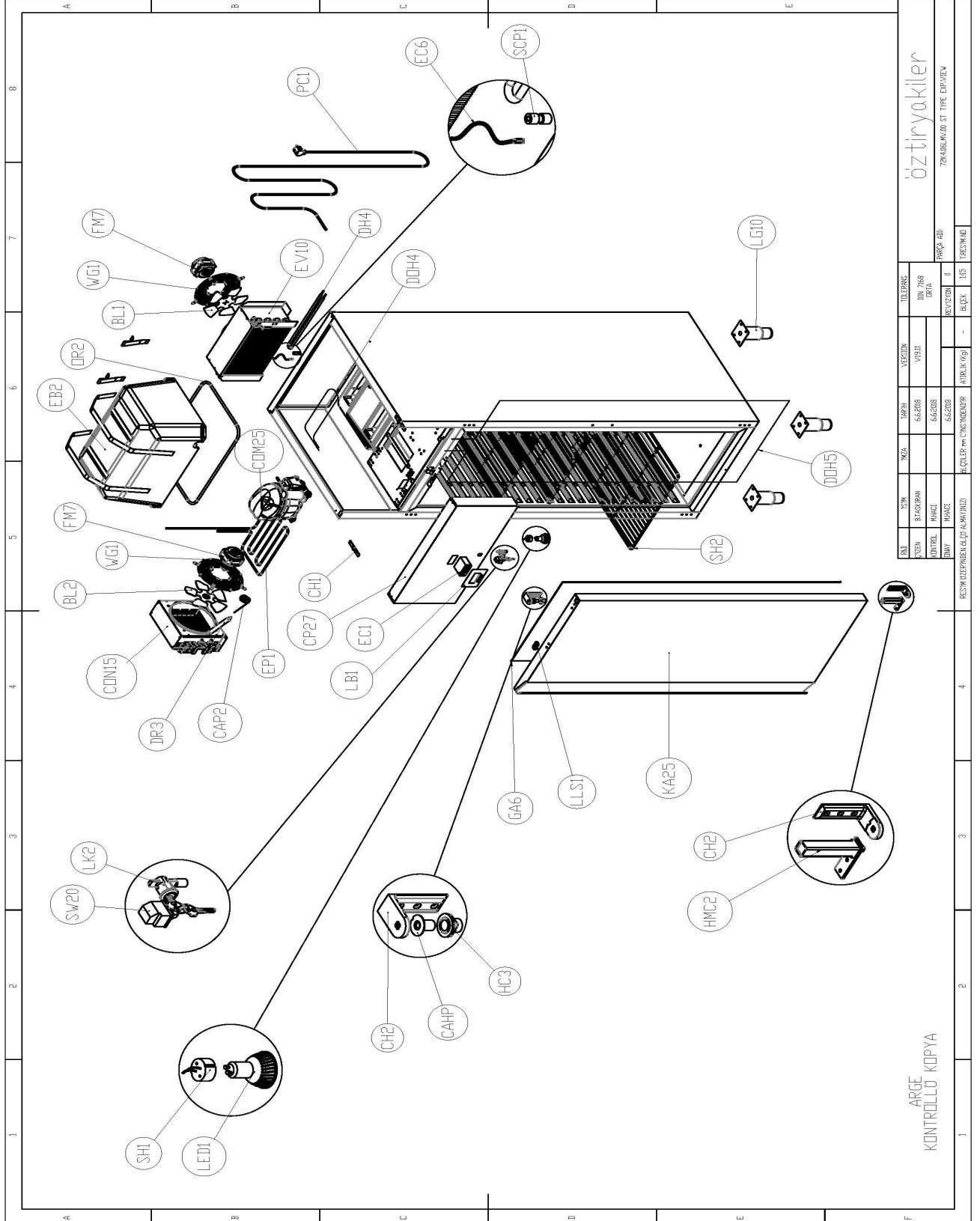




SPARE PART LIST

Spare Part ItemCode	Item name.	PictureId	Price.	Curr.
6268.00009.00	CONDENSER FAN BLADE IMPELLER ALU. Q20 CM-28°	BL1		
6268.00009.04	CONDENSER FAN BLADE IMPELLER ALU. Q20 CM-34°	BL2		
6201.00030.65	CABINET HINGE PIN	CAHP		
6268.00001.15	CAPILLARY 0,90x2,20 M	CAP2		
6201.00030.32	CANOPY HINGE	CH1		
6201.00030.64	CABINET HINGE	CH2		
6268.00006.182	COMPRESSOR R-290 EMBRACO NEU 2155 U	COM25		
6268.00010.013	KONDANSER 6R-10T-200-1,6 (MA 20 164)	CON15		
29K4.06NMV.B0007.00	GN 600 KANOP SACI K T P -430	CP27		
6246.00049.39	DEFROST HEATER Q8 400W/230V 390MM 2*1500MM SILICON CABLE	DH4		
6246.00049.41	REZISTANS SILIKON KABLO TB:5,8M SB:3M SB:1,4ER MT 220V 18W	DOH4		
6246.00049.09	REZ STANS KABLO S L KON TB:4,35MT SB:15 ER CM TOPLAM 20W	DOH5		
6268.00003.03	DRYER 20 GR	DR3		
6011.00004.32	EPS EVAPORATOR COVER FOR CABINETS	EB2		
6234.00009.02	CONTROLLER DIGITAL EVCO EV3B23N7 3 OUTPUT	EC1		
6234.00009.08	DIGITAL SENSOR EVCO NTC PROP EVTPN615F200	EC6		
6268.00001.58	RE-EVAPORATION PIPE	EP1		
6268.00011.62	EVAPARATOR GN 600 LMV-1200 NMV	EV10		
6268.00008.10	FAN MOTOR WEIGUANG ECM7112	FM7		
6268.00012.00	MAGNETIC SEAL GRAY 574*1450 MM GN 600 K MODEL	GA6		
6201.00030.042	CABINET HINGE PVC BUSHING	HC3		
6201.00030.27	SPRING FORCED HINGE FOR CABINET DOORS	HMC2		
29k4.06NMV.KA01.00	GN 600 D K T P KISA NOX KAPI-430	KA25		
6800.00001.57	FRONT PANEL LABEL-OZTIRYAKILER EKO	LB1		
6250.00001.180	SPOTLIGHT LED	LED1		
6260.00002.10	STAINLESS STEEL LEG 130-150 MM	LG10		
9099.G5VBO.1M5511	DOOR LOCK	LK2		
6800.00003.34	LOCK LIP STRIKE	LLS1		
6228.00002.07	ORING Q13	OR2		
6257.00009.10	POWER CORD LENGTH 3M 3x1,5 HO5VV-F	PC1		
2KLP.460.00140030.9.01	DIGITAL SENSOR COVER PART	SCP1		
6250.00003.08	STARTER HOLDER	SH1		
6268.00019.36	SHELF PE COATED WITH BACK GUARD GRAY-RAL 7045 GN- 650*530	SH2		
6232.00028.00	DOOR SWITCH DR-104 2,5A 250V AC NOVA	SW20		
6268.00015.01	FAN GUARD WIRE Q20 CM	WG1		

ARGE
KONTROLLÜ KOPYA

öztiyAkiler

72K4.06LMV.00 ST TİPE EXP.VIEW

TELEFON:		VERSİYON:		TARİH:	
YAZAN:	BAŞKANI:	6.6.2008	V1911	DIN 7469	01
KONTROL:	İMZA:	6.6.2008		DAYA	01
İMZA:	İMZA:	6.6.2008		REVİZYON:	01
KULLANILAN ÜRÜN/İÇERİKLER:		KULLANILAN ÜRÜN/İÇERİKLER:		KULLANILAN ÜRÜN/İÇERİKLER:	
KULLANILAN ÜRÜN/İÇERİKLER:		KULLANILAN ÜRÜN/İÇERİKLER:		KULLANILAN ÜRÜN/İÇERİKLER:	

RESİM ÜZERİNDEN ALINDI