

122.

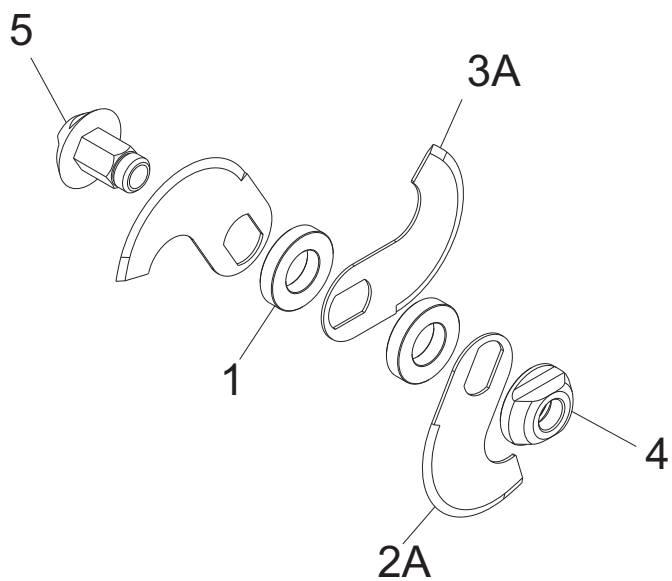
58

57

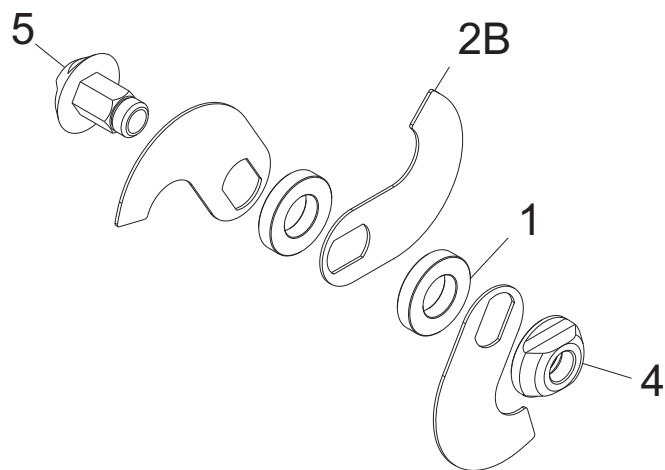
20



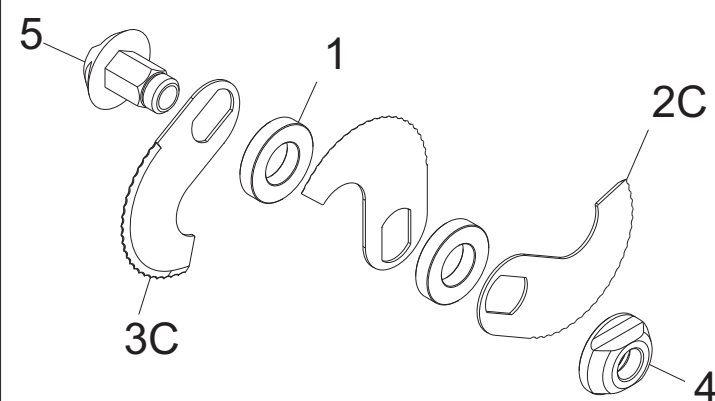
A1

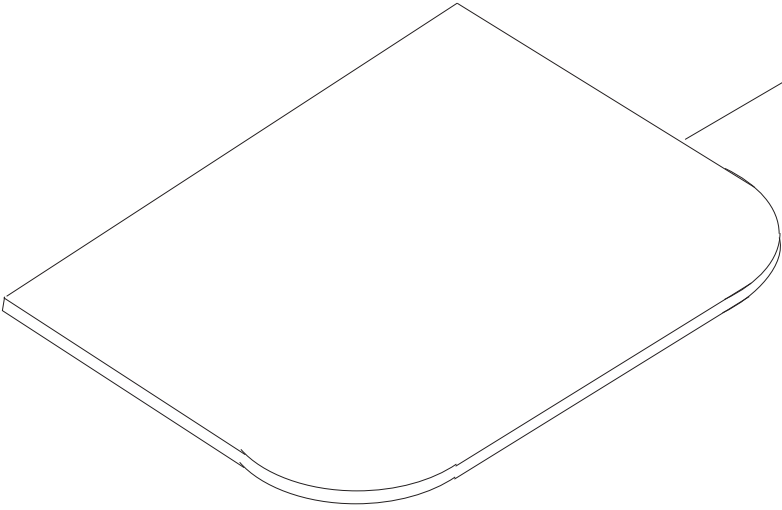


A2

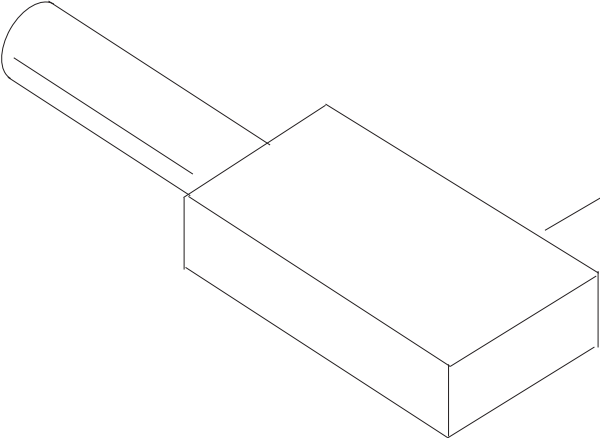


A3





200



201

KATANA 12 VV 220/60

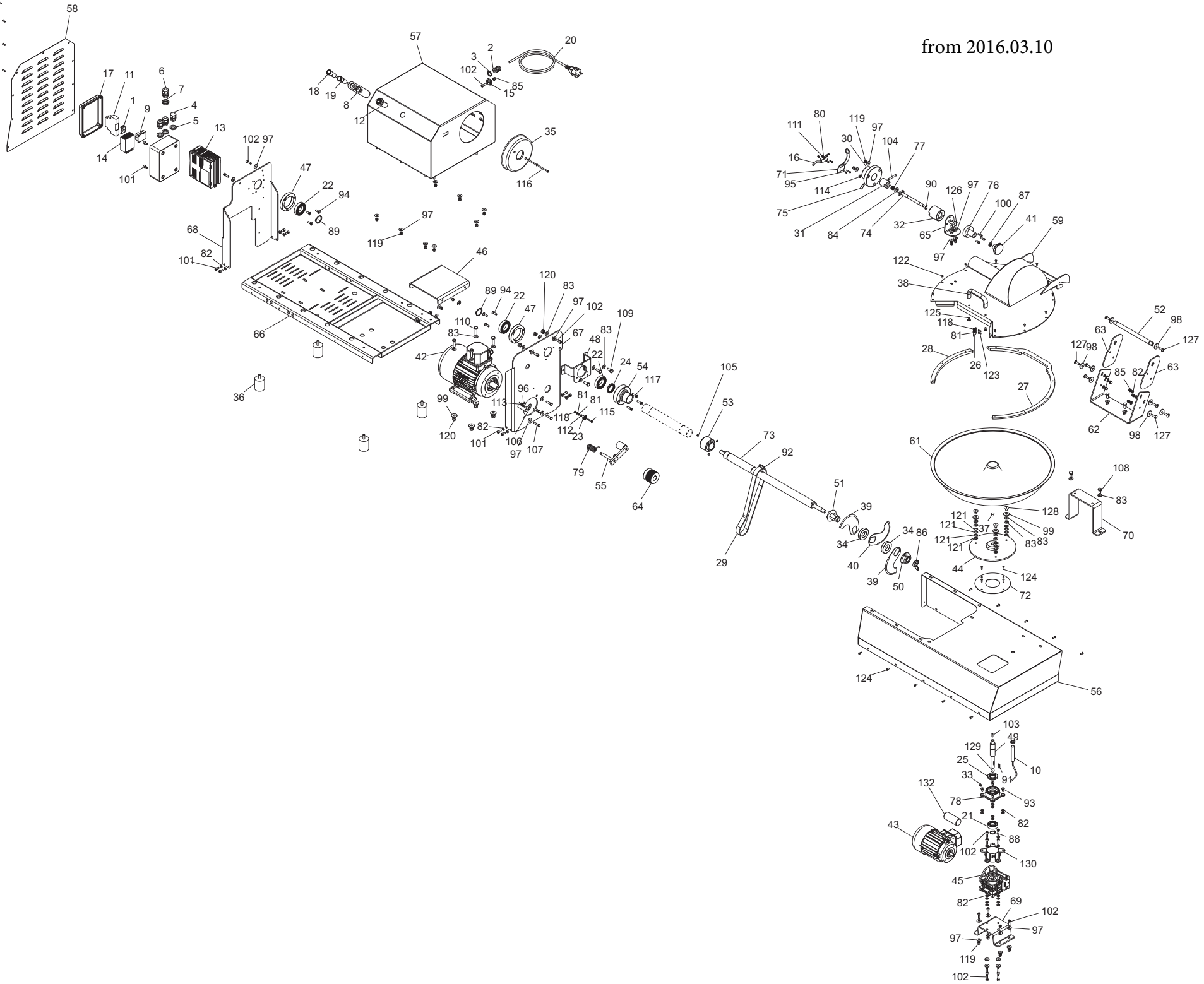
| Riferir | Nome prodotto | Codice |
|----------------|-------------------------------------|---------------|
| 200 | RASCHIETTO CUTTER COL.ROSSO | MSC04N200 |
| 201 | PIETRA AFFILATURA CUTTER | MSC04N174 |
| 1 | GUIDA DIN OMEGA H.7MM L=20MM | LF1000416020 |
| 2 | PRESSACAVO OTT.NICH.PG 11 | LF1010063 |
| 3 | DADO OTT.NICH.PG 11 | LF1010063A |
| 4 | PRESSACAVO PLASTICA PG 11 | LF1010072 |
| 5 | DADO PLASTICA PG 11 | LF1010072A |
| 6 | PRESSACAVO + DADO PLASTICA PG 13,5 | LF1010075 |
| 7 | DADO PLASTICA PG 13,5 | LF1010075A |
| 8 | MASCHER. DUE PULSANTI ACC. IS-SO | LF1013032 |
| 9 | SCHEDA INTERFACCIA CZ01-B IS BZ | LF1013060 |
| 10 | SENSORE INDUTTIVO 2C CUT.IND.C6 | LF102106005 |
| 11 | TELERUTTORE 24 CC CUT.IND. | LF102106020 |
| 12 | POTENZIOMETRO VAR. VEL CUT.IND. | LF102112001 |
| 13 | INVERTER DSA F 1,1KW MN CUT IND 12 | LF102112005 |
| 14 | ALIMENT. 500 MA 230V->24DC | LF102112010 |
| 15 | MORSETTO A PETTINE X EQUIPOTENZ. BZ | LF1030522050 |
| 16 | MICRO IP 67 HAMB. SEMIAUT. BZ | LF1030522066 |
| 17 | SCAT.GRIGIA ELETTR. ABB. 0852 | LF1041006 |
| 18 | PULSANTE SPIA ACCIAIO OMEGA 24 V | LF1041015 |
| 19 | PULSANTE IX STOP RIALZ CAV ET NC-NO | LF1041018 |
| 20 | CAVO 3 X 1 CON SPINA SHUKO | LF1061005 |
| 21 | CUSCINETTO 6004 2RS | If1110701 |
| 22 | CUSCINETTO 6006 2RS | LF1150010 |
| 23 | CUSCINETTO 626-2RS1 ASTINA TCM 30L | LF1193401 |
| 24 | ANEL.TEN. 30-40-5 VITON LABBRO SING | LF122106001 |
| 25 | ANEL.TEN. 20-42-7 DOPPIO LABBRO | LF1221100 |
| 26 | RASCHIATORE VASCA CUT.IND. | LF142106010 |
| 27 | GUARN. COP. POL. A CUT.IND.C12 | LF142112001 |
| 28 | GUARN. COP. POL. C CUT.IND.C12 | LF142112005 |
| 29 | CINGHIA GOMMA 660 J8 CUT.IND.C12 | LF142112020 |
| 30 | FLANGIA CANOTTO CAVA CUT.IND.C12 | LF142112035 |
| 31 | FLANGIA CANOT.CAVA INT. CUT.IND.C12 | LF142112040 |
| 32 | FLANGIA CANOTTO CUT.IND.C12 | LF142112045 |
| 34 | DIST. TRA COLT D50 SP10 CUT.IND.C20 | LF142120015 |
| 35 | PIEDINO ANTIV. 40X50 PM M8X23 70SH | LF1433007 |
| 37 | MANIGLIA PIENA 236-148 M5 INTER 94 | LF1510012 |
| 38 | COLTELLO AFF. SING. DX CUT.IND.C12 | LF152112003 |
| 39 | COLTELLO AFF. DOPPIA CUT.IND.C12 | LF152112005 |
| 40 | POMELLO FERMA CULLA IP 50-100 | LF1541001 |
| 41 | MOT. M80 HP 1 B34 4P 230/60 UL | LF182112015 |
| 42 | MOT. M56 HP 0,09 B14 4P 230/50 HZ | LF182120053 |
| 43 | PROTEZ. CIL.IN PVC NERO DRI 25 | LF2013013 |
| 44 | PIASTRA GUIDA VASCA CUT.IND.C6 | LF202106027 |
| 45 | RID. MNRV 030 B14 P56 I=100 C6 | LF202106055 |
| 46 | RINFORZO PIASTRE MOT CUT.IND.C6 | LF202106110 |
| 47 | FLANGIA SUPP CUSC COLT CUT.IND.C6 | LF202106130 |

| | | |
|-----|-------------------------------------|----------------|
| 48 | OMEGA SUPP COPERCHIOTTO CUT.IND.C6 | LF202106135 |
| 49 | ALBERO TRASC VASCA CUT.IND.C6 | LF202106210 |
| 50 | GHIERA MOZZO COLTELLI CUT.IND.C6 | LF202106220 |
| 51 | MOZZO PORTACOLTELLI CUT.IND. | LF202106225 |
| 52 | PERNO SUPP COPERCHIO CUT.IND.C6 | LF202106230 |
| 53 | PULEGGIA SUP ø50 J12 CUT.IND.C6 | LF202106240 |
| 56 | BASAMENTO CARENA CUT.IND.C12 | LF202112001 |
| 57 | CALOTTA CARENA CUT.IND.C12 | LF202112005 |
| 58 | CARTER POSTERIORE CUT.IND.C12 | LF202112010 |
| 59 | COPERCHIO VASCA CUT.IND.C12 | LF202112015 |
| 60 | VASCA SALDATA CUT.IND.C12 | LF202112025 |
| 61 | SUPP. COPERCHIO CUT.IND.C12 | LF202112030 |
| 62 | PIASTRA SUPP. COPERCHIO CUT.IND.C12 | LF202112033 |
| 64 | LAMIERA SUPPORTO SBLOC. CUT.IND.C12 | LF202112070 |
| 65 | FONDELLO BAS. CARENA CUT.IND.C12 | LF202112100 |
| 66 | SUPP.MOTORE TELAIO ANT CUT.IND.C12 | LF202112105 |
| 67 | SUPP.MOTORE TELAIO POST CUT.IND.C12 | LF202112115 |
| 68 | OMEGA SUPP RID. VASCA CUT.IND.C12 | LF202112120 |
| 69 | OMEGA SUPP COPERCHIO CUT.IND.C12 | LF202112140 |
| 70 | PIASTRA SUPP. COPERCHIO CUT.IND.C20 | LF202120033 |
| 71 | COPERCHIETTO FORO VASCA CUT.IND.C12 | LF202112150 |
| 72 | ALBERO PORTA COLTELLI CUT.IND.C12 | LF202112200 |
| 73 | PERNO CANOTTO CUT.IND.C12 | LF202112255 |
| 74 | PRESSORE IX SFERA/MOLLA APS/16I-M8 | LF2039286 |
| 75 | CANOTTO FERMA CULLA IP | LF2041029 |
| 76 | MOLLA CANOTTO IP | LF2041031 |
| 77 | FLANGIA RIDUTTORE ME 10 MP COMP | LF2043136 |
| 78 | MOLLA TENDICINGHIA PLP | IV76M20X40 |
| 79 | RONDELLA PIANA DIN 125 D 3 | IX2125003 |
| 80 | RONDELLA PIANA DIN 125 D 4 | IX2125004 |
| 81 | RONDELLA PIANA DIN 125 D 6 | IX2125006 |
| 82 | RONDELLA PIANA DIN 125 D 8 | IX2125008 |
| 83 | RONDELLA PIANA DIN 125 D 10 | IX2125010 |
| 84 | DADO CIECO DIN 1587 M 6 | IX21587LC006 |
| 85 | DADO AD ALETTE DIN 315 M 12 | IX2315012 |
| 86 | DADO ES. DIN 439 M 10 BASSO | IX2439010 |
| 87 | ANELLI D ARRESTO DIN 471 D 20E | IX2471020 |
| 88 | ANELLI D ARRESTO DIN 471 D 30E | IX2471030 |
| 89 | ANELLO RADIALE DIN 6799 M8 | IX26799008 |
| 90 | LINGUETTE DIN 6885/A 5X5X20 | IX26885A050520 |
| 91 | LINGUETTE DIN 6885/A 8X7X28 | IX26885A080728 |
| 92 | VITE TSPEI DIN 7991 M 6X14 | IX27991006014 |
| 93 | VITE TC- DIN 84 M 3X20 | IX284003020 |
| 94 | RONDELLA F.LARGA DIN 9021 D 5X15 | IX29021005015 |
| 95 | RONDELLA F.LARGA DIN 9021 D 6X18 | IX29021006018 |
| 96 | RONDELLA F.LARGA DIN 9021 D 6X24 | IX29021006024 |
| 97 | RONDELLA F.LARGA DIN 9021 D 8X24 | IX29021008024 |
| 98 | VITE TCEI DIN 912 M 5X16 | IX2912005016 |
| 99 | VITE TCEI DIN 912 M 6X12 | IX2912006012 |
| 100 | VITE TCEI DIN 912 M 6X20 | IX2912006020 |

| | | |
|-----|-------------------------------------|-----------------|
| 102 | VITE SENZA TESTA DIN 913 M 5X5 CE | IX2913005005 |
| 103 | VITE SENZA TESTA DIN 913 M 6X45 CE | IX2913006045 |
| 104 | VITE SENZA TESTA DIN 916 M 6X6 CE | IX2916006006 |
| 105 | VITE TE DIN 933 M 5X16 T.F. | IX2933005016 |
| 106 | VITE TE DIN 933 M 6X25 T.F. | IX2933006025 |
| 107 | VITE TE DIN 933 M 8X16 T.F. | IX2933008016 |
| 108 | VITE TE DIN 933 M 8X20 T.F. | IX2933008020 |
| 109 | VITE TE DIN 933 M 8X30 T.F. | IX2933008030 |
| 110 | DADO ES. DIN 934 M 3 | IX2934003 |
| 111 | DADO ES. DIN 934 M 4 | IX2934004 |
| 112 | DADO ES. DIN 934 M 5 | IX2934005 |
| 113 | DADO ES. DIN 934 M 6 | IX2934006 |
| 114 | VITE TSP- DIN 963 M 4X25 | IX2963004025 |
| 116 | DADO AUTOBLOCC. ES DIN 982 M 4 ALTO | IX2982004 |
| 117 | DADO AUTOBLOCC. ES DIN 982 M 6 ALTO | IX2982006 |
| 118 | DADO AUTOBLOCC. ES DIN 982 M8 ALTO | IX2982008 |
| 120 | VITE POELIERS M 4X8 | IX2POEL004008 |
| 121 | VITE POELIERS M 4X10 | IX2POEL004010 |
| 122 | VITE POELIERS M 4X12 | IX2POEL004012 |
| 123 | VITE POELIERS M 5X10 | IX2POEL005010 |
| 124 | VITE POELIERS M 6X10 | IX2POEL006010 |
| 125 | VITE POELIERS M 6X15 | IX2POEL006015 |
| 127 | SFERA DIAM. 13,494 TC 8 VGS | 29320201 |
| 128 | FLANG.DISTANZ.SUPP.MOT. TC 8 VGS | 29561200 |
| 130 | CONDENSATORE DA 6,3 UF | LF1011006,3 |
| 141 | VITE POELIERS M 5X16 | IX2POEL005016 |
| 142 | DIST. PLAST 5,2X10X5 SUPP.CAS.SO IX | LF1400416007 |
| 143 | RONDELLA PIANA DIN 125 D 5 | IX2125005 |
| 144 | DADO CIECO DIN 1587 M 5 | IX21587LC005 |
| A2 | ASS. MOZZO CUT.IND C12 BAT | LF0221A12101010 |
| A3 | ASS. MOZZO CUT.IND C12 DENT | LF0221A12131111 |
| A1 | ASS. MOZZO CUT.IND C12 STD | LF0221A12030503 |
| 1 | DIST. TRA COLT D50 SP10 CUT.IND.C20 | LF142120015 |
| 02A | COLTELLO AFF. SING. DX CUT.IND.C12 | LF152112003 |
| 03A | COLTELLO AFF. DOPPIA CUT.IND.C12 | LF152112005 |
| 4 | GHIERA MOZZO COLTELLI CUT.IND.C6 | LF202106220 |
| 5 | MOZZO PORTACOLTELLI CUT.IND. | LF202106225 |

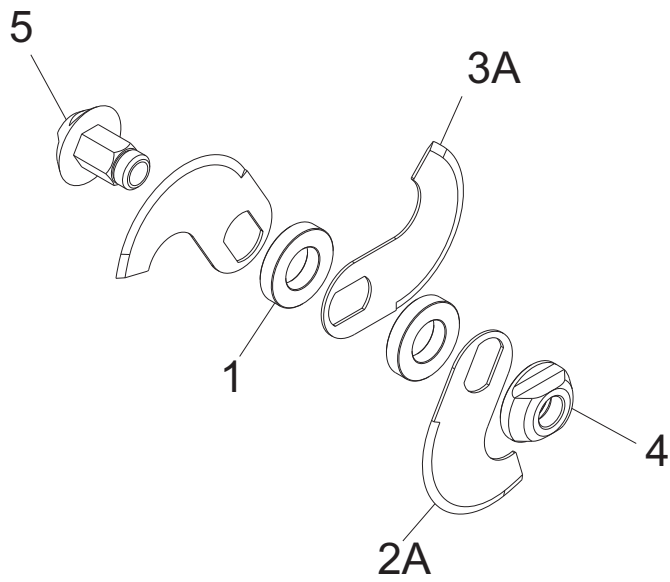
124

from 2016.03.10

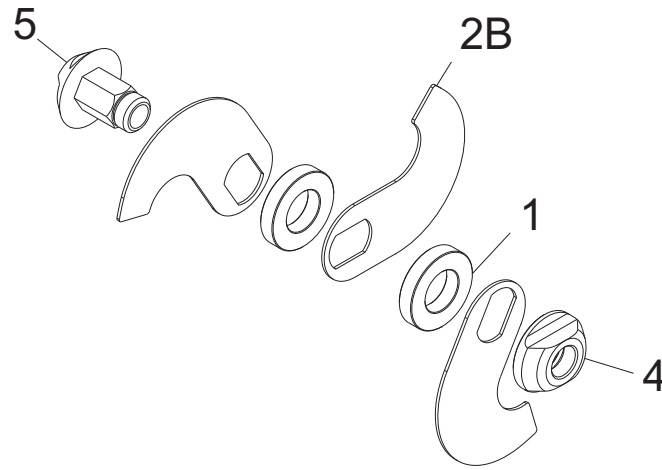


from 2016.03.10

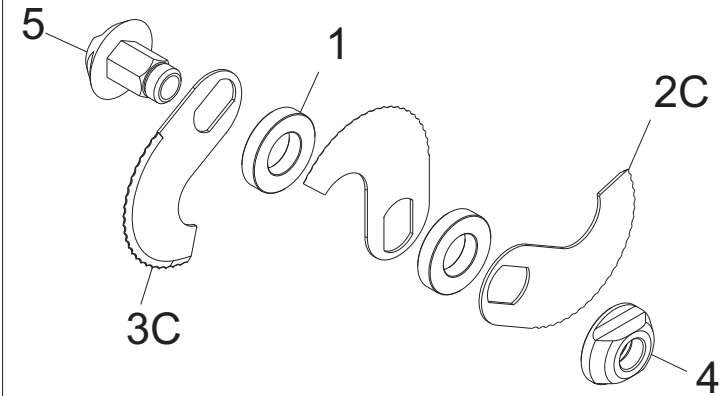
A1



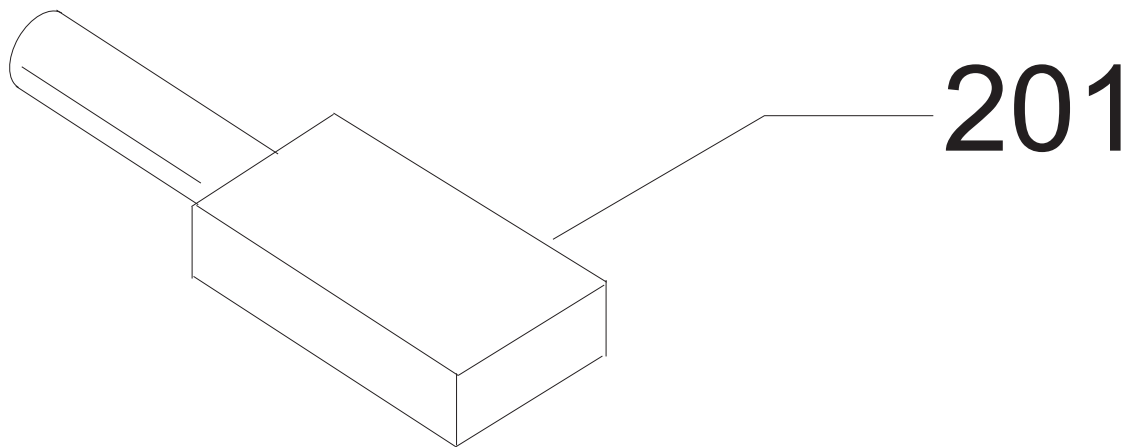
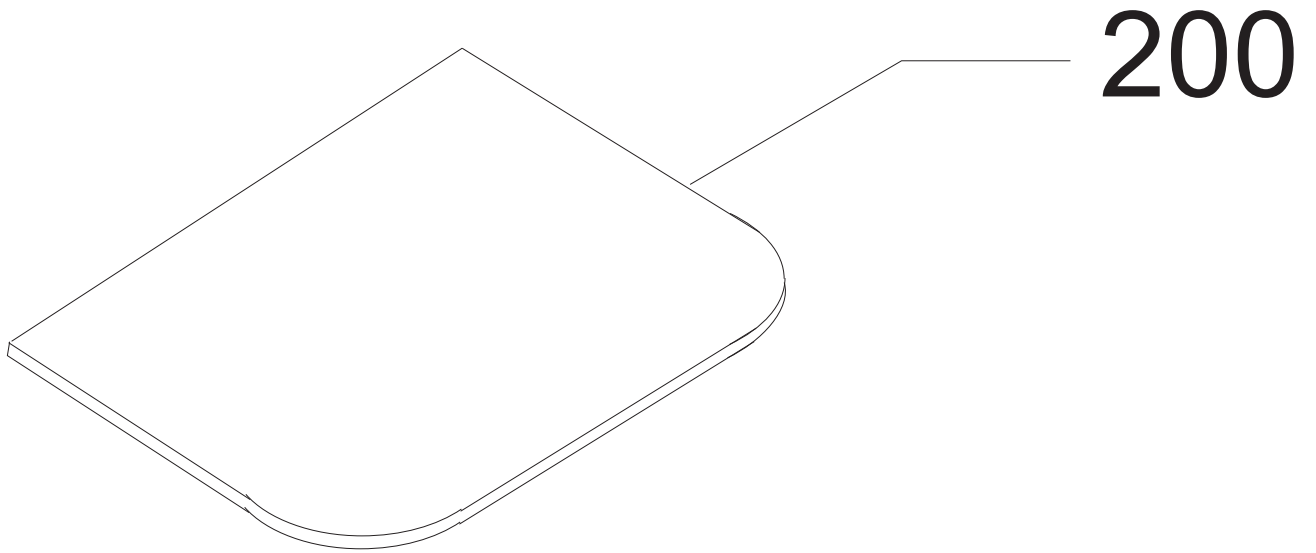
A2



A3



from 2016.03.10



KATANA 12 VV 220/60 - from 2016.03.10

| Riferim | Nome prodotto | Codice |
|----------------|-------------------------------------|---------------|
| 200 | RASCHIETTO CUTTER COL.ROSSO | MSC04N200 |
| 201 | PIETRA AFFILATURA CUTTER | MSC04N174 |
| 1 | GUIDA DIN OMEGA H.7MM L=20MM | LF1000416020 |
| 2 | PRESSACAVO OTT.NICH.PG 11 | LF1010063 |
| 3 | DADO OTT.NICH.PG 11 | LF1010063A |
| 4 | PRESSACAVO PLASTICA PG 11 | LF1010072 |
| 5 | DADO PLASTICA PG 11 | LF1010072A |
| 6 | PRESSACAVO + DADO PLASTICA PG 13,5 | LF1010075 |
| 7 | DADO PLASTICA PG 13,5 | LF1010075A |
| 8 | MASCHER. DUE PULSANTI ACC. IS-SO | LF1013032 |
| 9 | SCHEDA INTERFACCIA CZ01-B IS BZ | LF1013060 |
| 10 | SENSORE INDUTTIVO 2C CUT.IND.C6 | LF102106005 |
| 11 | TELERUTTORE 24 CC CUT.IND. | LF102106020 |
| 12 | POTENZIOMETRO VAR. VEL CUT.IND. | LF102112001 |
| 13 | INVERTER DSA F 1,1KW MN CUT IND 12 | LF102112005 |
| 14 | ALIMENT. 500 MA 230V->24DC | LF102112010 |
| 15 | MORSETTO A PETTINE X EQUIPOTENZ. BZ | LF1030522050 |
| 16 | MICRO IP 67 HAMB. SEMIAUT. BZ | LF1030522066 |
| 17 | SCAT.GRIGIA ELETTR. ABB. 0852 | LF1041006 |
| 18 | PULSANTE SPIA ACCIAIO OMEGA 24 V | LF1041015 |
| 19 | PULSANTE IX STOP RIALZ CAV ET NC-NO | LF1041018 |
| 20 | CAVO 3 X 1 CON SPINA SHUKO | LF1061005 |
| 21 | CUSCINETTO 6004 2RS | LF1110701 |
| 22 | CUSCINETTO 6006 2RS | LF1150010 |
| 23 | CUSCINETTO 626-2RS1 ASTINA TCM 30L | LF1193401 |
| 24 | ANEL.TEN. 30-40-5 VITON LABBRO SING | LF122106001 |
| 25 | ANEL.TEN. 20-42-7 DOPPIO LABBRO | LF1221100 |
| 26 | RASCHIATORE VASCA CUT.IND. | LF142106010 |
| 27 | GUARN. COP. POL. A CUT.IND.C12 | LF142112001 |
| 28 | GUARN. COP. POL. C CUT.IND.C12 | LF142112005 |
| 29 | CINGHIA GOMMA 660 J8 CUT.IND.C12 | LF142112020 |
| 30 | FLANGIA CANOTTO CAVA CUT.IND.C12 | LF142112035 |
| 31 | FLANGIA CANOT.CAVA INT. CUT.IND.C12 | LF142112040 |
| 32 | FLANGIA CANOTTO CUT.IND.C12 | LF142112045 |
| 34 | DIST. TRA COLT D50 SP10 CUT.IND.C20 | LF142120015 |
| 36 | PIEDINO ANTIV. 40X50 PM M8X23 70SH | LF1433007 |
| 38 | MANIGLIA PIENA 236-148 M5 INTER 94 | LF1510012 |
| 39 | COLTELLO AFF. SING. DX CUT.IND.C12 | LF152112003 |
| 40 | COLTELLO AFF. DOPPIA CUT.IND.C12 | LF152112005 |
| 41 | POMELLO FERMA CULLA IP 50-100 | LF1541001 |
| 42 | MOT. M80 HP 1 B34 4P 230/60 UL | LF182112015 |
| 43 | MOT. M56 HP 0,09 B14 4P 230/50 HZ | LF182120053 |
| 44 | PIASTRA GUIDA VASCA CUT.IND.C6 | LF202106027 |
| 45 | RID. MNRV 030 B14 P56 I=100 C6 | LF202106055 |
| 46 | RINFORZO PIASTRE MOT CUT.IND.C6 | LF202106110 |
| 47 | FLANGIA SUPP CUSC COLT CUT.IND.C6 | LF202106130 |
| 49 | ALBERO TRASC VASCA CUT.IND.C6 | LF202106210 |

| | | |
|-----|-------------------------------------|----------------|
| 50 | GHIERA MOZZO COLTELLI CUT.IND.C6 | LF202106220 |
| 51 | MOZZO PORTACOLTELLI CUT.IND. | LF202106225 |
| 52 | PERNO SUPP COPERCHIO CUT.IND.C6 | LF202106230 |
| 53 | PULEGGIA SUP ø50 J12 CUT.IND.C6 | LF202106240 |
| 56 | BASAMENTO CARENA CUT.IND.C12 | LF202112001 |
| 57 | CALOTTA CARENA CUT.IND.C12 | LF202112005 |
| 58 | CARTER POSTERIORE CUT.IND.C12 | LF202112010 |
| 59 | COPERCHIO VASCA CUT.IND.C12 | LF202112015 |
| 61 | VASCA SALDATA CUT.IND.C12 | LF202112025 |
| 62 | SUPP. COPERCHIO CUT.IND.C12 | LF202112030 |
| 63 | PIASTRA SUPP. COPERCHIO CUT.IND.C12 | LF202112033 |
| 65 | LAMIERA SUPPORTO SBLOC. CUT.IND.C12 | LF202112070 |
| 66 | FONDELLO BAS. CARENA CUT.IND.C12 | LF202112100 |
| 67 | SUPP.MOTORE TELAIO ANT CUT.IND.C12 | LF202112105 |
| 68 | SUPP.MOTORE TELAIO POST CUT.IND.C12 | LF202112115 |
| 69 | OMEGA SUPP RID. VASCA CUT.IND.C12 | LF202112120 |
| 70 | OMEGA SUPP COPERCHIO CUT.IND.C12 | LF202112140 |
| 71 | SUPPORTO MICRO SBLOC CO CUT.IND.C12 | LF202112145 |
| 72 | COPERCHIETTO FORO VASCA CUT.IND.C12 | LF202112150 |
| 73 | ALBERO PORTA COLTELLI CUT.IND.C12 | LF202112200 |
| 74 | PERNO CANOTTO CUT.IND.C12 | LF202112255 |
| 75 | PRESSORE IX SFERA/MOLLA APS/16I-M8 | LF2039286 |
| 76 | CANOTTO FERMA CULLA IP | LF2041029 |
| 77 | MOLLA CANOTTO IP | LF2041031 |
| 78 | FLANGIA RIDUTTORE ME 10 MP COMP | LF2043136 |
| 79 | MOLLA TENDICINGHIA PLP | IV76M20X40 |
| 80 | RONDELLA PIANA DIN 125 D 3 | IX2125003 |
| 81 | RONDELLA PIANA DIN 125 D 4 | IX2125004 |
| 82 | RONDELLA PIANA DIN 125 D 6 | IX2125006 |
| 83 | RONDELLA PIANA DIN 125 D 8 | IX2125008 |
| 84 | RONDELLA PIANA DIN 125 D 10 | IX2125010 |
| 85 | DADO CIECO DIN 1587 M 6 | IX21587LC006 |
| 86 | DADO AD ALETTE DIN 315 M 12 | IX2315012 |
| 87 | DADO ES. DIN 439 M 10 BASSO | IX2439010 |
| 88 | ANELLI D ARRESTO DIN 471 D 20E | IX2471020 |
| 89 | ANELLI D ARRESTO DIN 471 D 30E | IX2471030 |
| 90 | ANELLO RADIALE DIN 6799 M8 | IX26799008 |
| 91 | LINGUETTE DIN 6885/A 5X5X20 | IX26885A050520 |
| 92 | LINGUETTE DIN 6885/A 8X7X28 | IX26885A080728 |
| 93 | VITE TSPEI DIN 7991 M 6X14 | IX27991006014 |
| 94 | VITE TSPEI DIN 7991 M 6X20 | IX27991006020 |
| 95 | VITE TC- DIN 84 M 3X20 | IX284003020 |
| 96 | RONDELLA F.LARGA DIN 9021 D 5X15 | IX29021005015 |
| 97 | RONDELLA F.LARGA DIN 9021 D 6X18 | IX29021006018 |
| 98 | RONDELLA F.LARGA DIN 9021 D 6X24 | IX29021006024 |
| 99 | RONDELLA F.LARGA DIN 9021 D 8X24 | IX29021008024 |
| 100 | VITE TCEI DIN 912 M 5X16 | IX2912005016 |
| 101 | VITE TCEI DIN 912 M 6X12 | IX2912006012 |
| 102 | VITE TCEI DIN 912 M 6X20 | IX2912006020 |
| 104 | VITE SENZA TESTA DIN 913 M 6X45 CE | IX2913006045 |

| | | |
|-----|-------------------------------------|-----------------|
| 105 | VITE SENZA TESTA DIN 916 M 6X6 CE | IX2916006006 |
| 106 | VITE TE DIN 933 M 5X16 T.F. | IX2933005016 |
| 107 | VITE TE DIN 933 M 6X25 T.F. | IX2933006025 |
| 108 | VITE TE DIN 933 M 8X16 T.F. | IX2933008016 |
| 109 | VITE TE DIN 933 M 8X20 T.F. | IX2933008020 |
| 110 | VITE TE DIN 933 M 8X30 T.F. | IX2933008030 |
| 111 | DADO ES. DIN 934 M 3 | IX2934003 |
| 112 | DADO ES. DIN 934 M 4 | IX2934004 |
| 113 | DADO ES. DIN 934 M 5 | IX2934005 |
| 114 | DADO ES. DIN 934 M 6 | IX2934006 |
| 115 | VITE TSP- DIN 963 M 4X25 | IX2963004025 |
| 118 | DADO AUTOBLOCC. ES DIN 982 M 4 ALTO | IX2982004 |
| 119 | DADO AUTOBLOCC. ES DIN 982 M 6 ALTO | IX2982006 |
| 120 | DADO AUTOBLOCC. ES DIN 982 M8 ALTO | IX2982008 |
| 122 | VITE POELIERS M 4X8 | IX2POEL004008 |
| 123 | VITE POELIERS M 4X10 | IX2POEL004010 |
| 124 | VITE POELIERS M 4X12 | IX2POEL004012 |
| 125 | VITE POELIERS M 5X10 | IX2POEL005010 |
| 126 | VITE POELIERS M 6X10 | IX2POEL006010 |
| 128 | VITE POELIERS M 8X12 | IX2POEL008012 |
| 129 | SFERA DIAM. 13,494 TC 8 VGS | 29320201 |
| 130 | FLANG.DISTANZ.SUPP.MOT. TC 8 VGS | 29561200 |
| 132 | CONDENSATORE DA 6,3 UF | LF1011006,3 |
| A2 | ASS. MOZZO CUT.IND C12 BAT | LF0221A12101010 |
| A3 | ASS. MOZZO CUT.IND C12 DENT | LF0221A12131111 |
| A1 | ASS. MOZZO CUT.IND C12 STD | LF0221A12030503 |
| 1 | DIST. TRA COLT D50 SP10 CUT.IND.C20 | LF142120015 |
| 02A | COLTELLO AFF. SING. DX CUT.IND.C12 | LF152112003 |
| 03A | COLTELLO AFF. DOPPIA CUT.IND.C12 | LF152112005 |
| 4 | GHIERA MOZZO COLTELLI CUT.IND.C6 | LF202106220 |
| 5 | MOZZO PORTACOLTELLI CUT.IND. | LF202106225 |