

Blixer® 2 / 3 / 4 / 4 V.V.

Consignes de sécurité et d'utilisation / Safety and Operating Instructions
 Veiligheidsvoorschriften en gebruiksaanwijzing / Sicherheits- und Bedienungshinweise

À fixer au mur.
 Hang on the wall.
 Aan de wand te bevestigen.
 An der Wand zu befestigen.



robot coupe®

www.robot-coupe.com

Tableau de commande / Control Panel / Bedieningspaneel / Bedienfeld



Bouton Arrêt
 Power Off Button
 UIT
 Ausschalttaste



Bouton Marche
 Power On Button
 AAN
 Einschalttaste



Bouton Pulse
 Pulse button
 Pulse
 Momentschalter

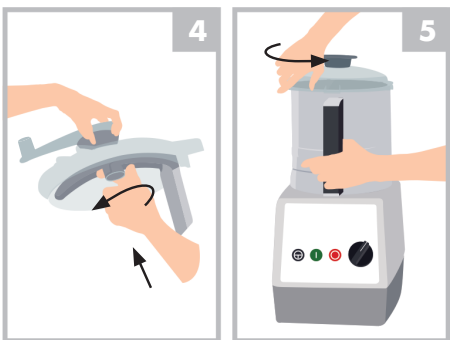
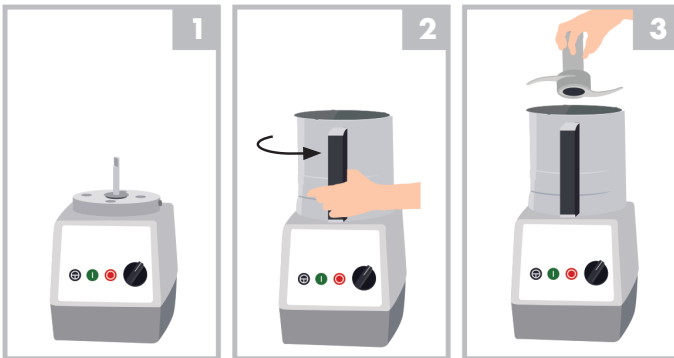


Blixer 4 Sélecteur de vitesses
 2-speed Selector switch
 Blixer 4 Snelheidsschakelaar
 Blixer 4 Drehzahlwähler

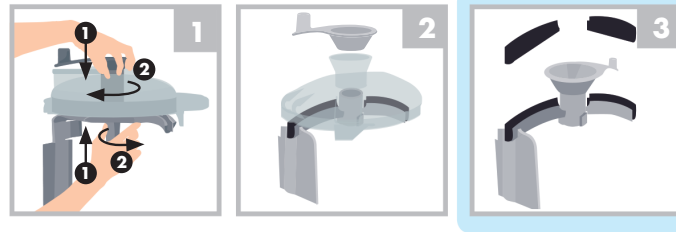


Blixer 4 V.V. Variateur de vitesses
 Speed variator
 Blixer 4 V.V. Toerenregelaar
 Blixer 4 V.V. Drehzahlregler

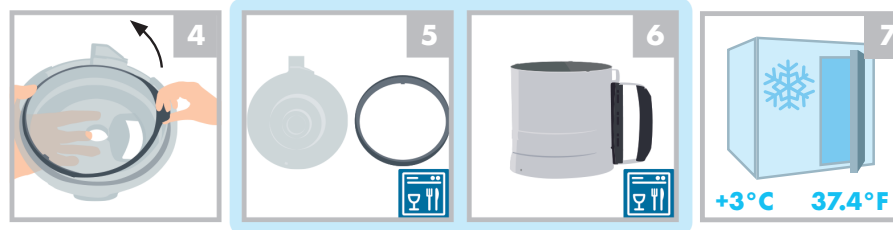
Mise en marche et utilisation / Switching on and using the mixer / Inwerkingstelling en gebruik / Inbetriebnahme und Bedienung



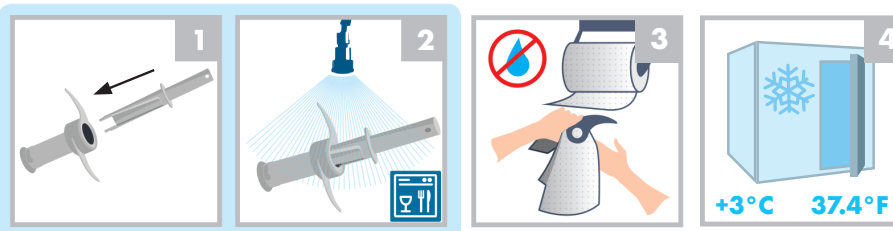
Nettoyage et entretien / Cleaning and maintenance / Reiniging en onderhoud / Reinigung und Wartung



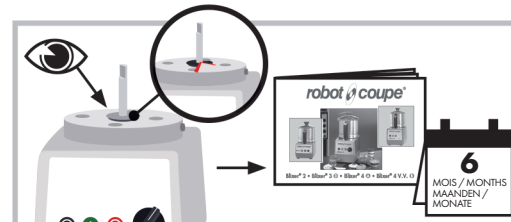
Cuve / Bowl / Kuip / Schüssel



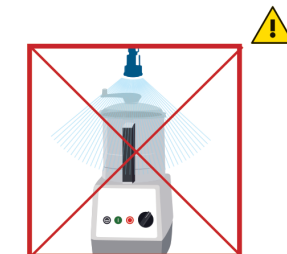
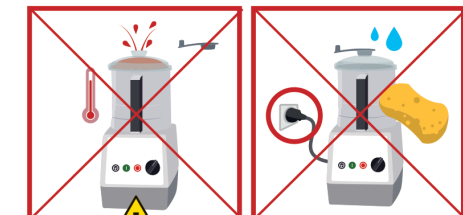
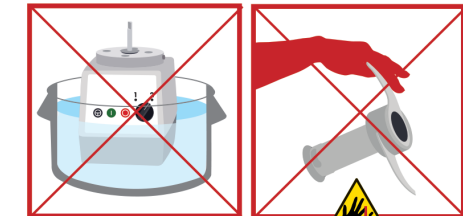
BLIXER 3 / 4 Couteau / Blade / Mes / Messer



Bague d'étanchéité / O-ring (seal) / Afdichtingsring / Dichtungsring



Sécurité / Safety / Veiligheid / Sicherheit



Ne jamais essayer de supprimer les systèmes de verrouillage et de sécurité. / Never try to remove the locking and safety systems. / Probeer nooit de vergrendelings- en beveiligingssystemen buiten werking te stellen. / Niemals versuchen, die Verriegelungs- oder Sicherheitsvorrichtungen zu umgehen.

Blixer® 2 / 3 / 4 / 4 V.V.

Consignas de seguridad y empleo / Instruções de segurança e de utilização
Istruzioni di sicurezza e d' utilizzo / Техника безопасности и руководство по эксплуатации

Debe fijarse a la pared.
Para fixar na parede
Da fissare a parete
Повесить на стену



robot coupe®
www.robot-coupe.com

Panel de mandos / Painel de controlo / Quadro comandi / Панель управления



Botón Parada
Botão Desligar
Pulsante arresto
Кнопка « Стоп »



Botón Marcha
Botão Ligar
Pulsante accensione
Кнопка « Пуск »



Botón Pulse
Botão Pulse
Pulsante impulsi
Кнопка « Пульс »

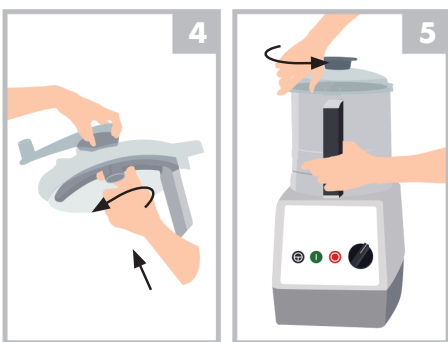
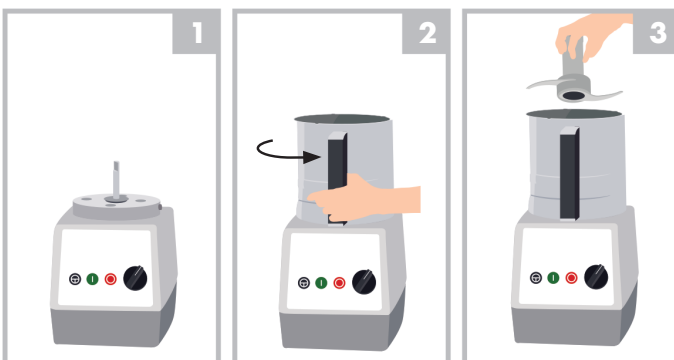


Blixer 4 Selector de velocidade
Blixer 4 Seletor de velocidade
Blixer 4 – Selettore di velocità
Blixer 4 Переключатель скорости

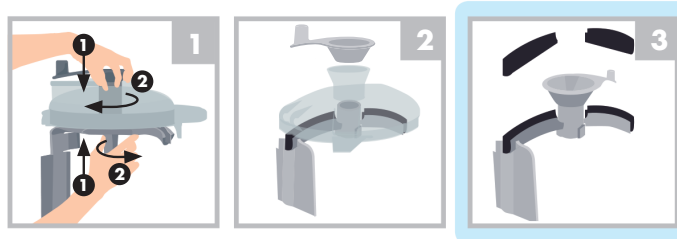


Blixer 4 V.V. Variador de velocidades
Blixer 4 V.V. Variador de velocidade
Blixer 4 V.V. – Variatore di velocità
Blixer 4 V.V. Регулятор скорости

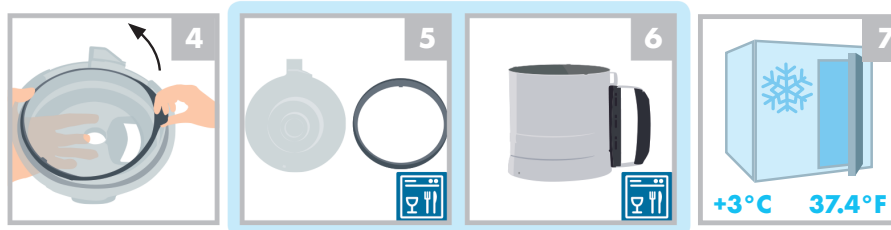
Puesta en marcha y utilización / Ligaçõ e utilização / Accensione e utilizzo / Включение и использование



Limpieza y mantenimiento / Limpeza e manutenção / Pulizia e manutenzione / Чистка и уход

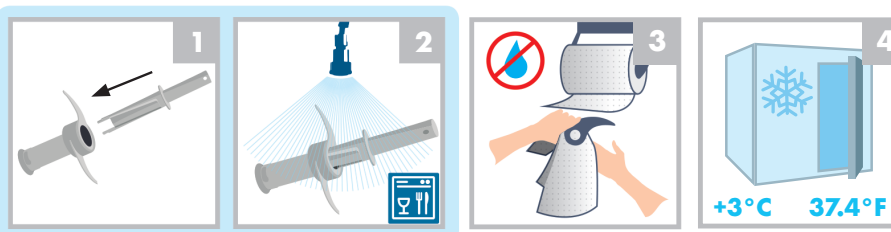


Cuba / Cuba / Vasca / Чаша

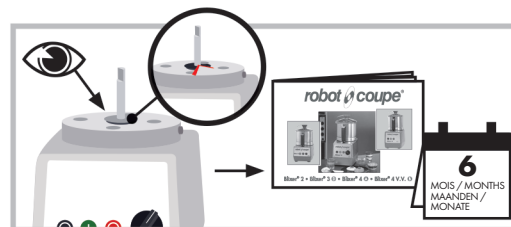


BLIXER 3 / 4

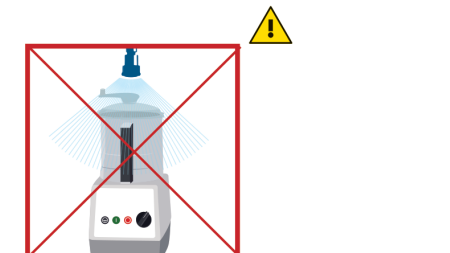
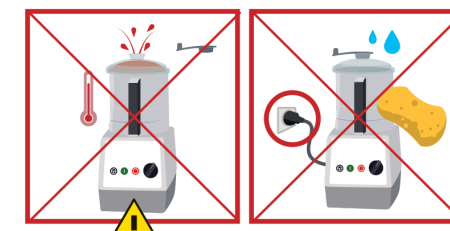
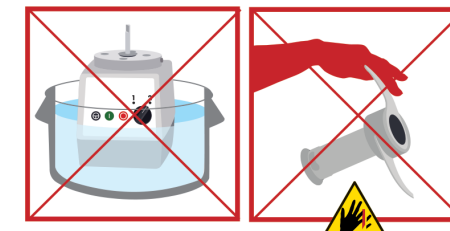
Cuchilla / Lâmina / Coltello / Нож



Anillo de hermeticidad / Anel de vedação / Anello di tenuta / Уплотнительное кольцо



Seguridad / Segurança / Sicurezza / Безопасность



Nunca tratar de suprimir los sistemas de bloqueo y de seguridad. / Nunca tentar suprimir os sistemas de bloqueio e de segurança. / Non cercare in alcun caso di eliminare i sistemi di blocco e di sicurezza. / Никогда не отключать системы блокировки и защиты.