

## IVR 50/24-2 SC

For safe vacuuming of solids such as combustible and hazardous dust and swarf: The mobile, robust IVR 50/24-2 Sc for operation in non-explosive areas.



Made in Germany



### Order no.

9.989-410.0

- Cyclone-like pre-separation system
- Ergonomic container control

### Technical data

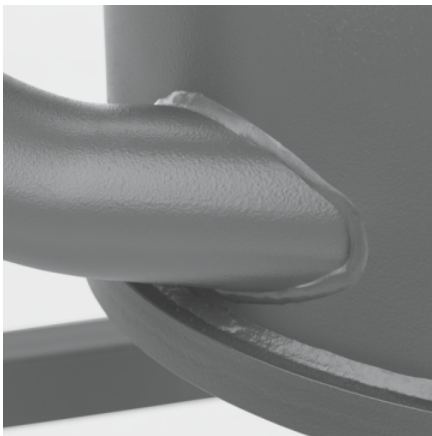
|                             |             |                         |
|-----------------------------|-------------|-------------------------|
| EAN code                    |             | 4054278695006           |
| Supply voltage              | Ph / V / Hz | 1 / 220 - 240 / 50 - 60 |
| Air flow                    | l/s / m³/h  | 148 / 532               |
| Vacuum                      | mbar / kPa  | 230 / 23                |
| Container content           | l           | 50                      |
| Rated input power           | kW          | 2.4                     |
| Vacuuming type              |             | Electric                |
| Connection nominal diameter |             | ID 50                   |
| Accessory nominal diameter  |             | ID 50 / ID 40           |
| Sound pressure level        | dB(A)       | 68                      |
| Main filter dust class      |             | M                       |
| Filter area for main filter | m²          | 1.75                    |
| Weight without accessories  | kg          | 90                      |
| Weight incl. packaging      | kg          | 90                      |
| Dimensions (L × W × H)      | mm          | 855 × 760 × 1290        |

Users must receive training on this device.

### Equipment

Container emptying Set-down trolley

- Included in the scope of supply.



### Particularly robust, particularly flexible

- With practical, movable suction hose port/pipe bend.
- Despite its very compact design, it features numerous options for carrying accessories.
- Machine and chassis very robust and equipped with high wall thicknesses.



### Fitted with two very quiet fan motors

- For powerful suction power and optimum cleaning performance.
- Fans can be switched on separately for individual suction power as required.
- Very quiet drive head ensures that the cooling air is blown out evenly.



### Convenient, manual filter cleaning

- Effortless operation by means of an ergonomically placed lever if required.
- Extends the life of the filter and thus reduces the maintenance effort.
- Identical cleaning results, regardless of the amount of force used.

## ACCESSORIES FOR IVR 50/24-2 SC

### 9.989-410.0

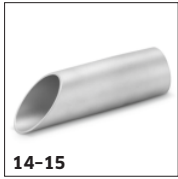


|  | Order no. | Description |                                     |
|--|-----------|-------------|-------------------------------------|
| <b>EMPTYING SUPPORTS</b>                 |           |             |                                     |
| <b>Emptying bags</b>                     |           |             |                                     |
| PE emptying bag dia. 540 mm 50 l         | 1         | 9.977-885.0 | <input checked="" type="checkbox"/> |
| <b>ACCESSORY SETS</b>                    |           |             |                                     |
| <b>Accessory kit for liquids</b>         |           |             |                                     |
| Liquid accessory kit DN 40               | 2         | 9.989-660.0 | <input type="checkbox"/>            |
| Liquid accessory kit DN50                | 3         | 9.989-661.0 | <input type="checkbox"/>            |
| <b>Accessory kit for liquids/chips</b>   |           |             |                                     |
| Accessory kit for liquids / sawdust DN40 | 4         | 9.989-657.0 | <input type="checkbox"/>            |
| Accessory kit for liquids/chips DN50     | 5         | 9.989-658.0 | <input type="checkbox"/>            |
| <b>Accessory kit for solids/dust</b>     |           |             |                                     |
| Accessory kit for solids/dust DN 40      | 6         | 9.989-659.0 | <input type="checkbox"/>            |
| Accessory kit for solids/dust DN 50      | 7         | 9.989-662.0 | <input type="checkbox"/>            |
| <b>NOZZLES</b>                           |           |             |                                     |
| <b>Standard nozzles</b>                  |           |             |                                     |
| Standard PVC nozzle DN40                 | 8         | 9.989-674.0 | <input type="checkbox"/>            |
| Standard PVC nozzle DN50                 | 9         | 9.989-673.0 | <input type="checkbox"/>            |
| Standard nozzle silicone DN40            | 10        | 9.988-401.0 | <input type="checkbox"/>            |
| Standard nozzle silicone DN50            | 11        | 9.988-402.0 | <input type="checkbox"/>            |
| Standard nozzle cuttable rubber DN40     | 12        | 9.989-677.0 | <input type="checkbox"/>            |
| Standard nozzle cuttable rubber DN50     | 13        | 9.989-675.0 | <input type="checkbox"/>            |
| Standard aluminium nozzle DN40           | 14        | 9.980-748.0 | <input type="checkbox"/>            |

■ Included in the scope of supply. □ Available accessories.

## ACCESSORIES FOR IVR 50/24-2 SC

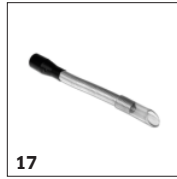
### 9.989-410.0



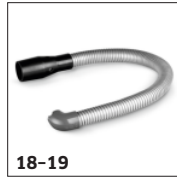
14-15



16



17



18-19



20, 23-24



21, 27



22



25-26



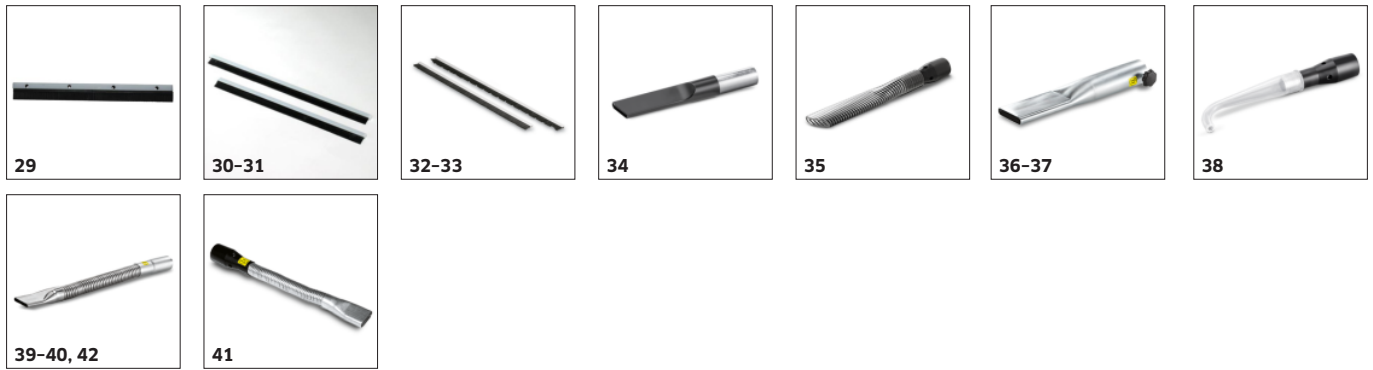
28

|   |    | Order no.   | Description   |                          |
|---|----|-------------|---|--------------------------|
| <b>NOZZLES</b>                                |    |             |   |                          |
| <b>Standard nozzles</b>                       |    |             |   |                          |
| Standard aluminium nozzle DN50                | 15 | 9.980-749.0 | Diagonal nozzle made from anodised aluminium, electroconductive, DN 50.                                   | <input type="checkbox"/> |
| <b>Flexible standard nozzles</b>              |    |             |   |                          |
| Standard nozzle flexible PVC DN40             | 16 | 9.981-420.0 | Electroconductive, flexible round nozzle made from galvanised steel, with rubber mouthpiece DN 30.        | <input type="checkbox"/> |
| Standard nozzle flexible PVC DN50             | 17 | 9.981-421.0 | Electroconductive, flexible round nozzle made from galvanised steel, DN 50, with rubber mouthpiece DN 30. | <input type="checkbox"/> |
| Standard nozzle, flexible, angled 90° PP DN40 | 18 | 9.981-429.0 | Flexible, electroconductive angled nozzle, DN 40, length: 800 mm.   | <input type="checkbox"/> |
| Standard nozzle, flexible, angled 90° PP DN50 | 19 | 9.981-430.0 | Flexible, electroconductive angled nozzle, DN 50, length: 800 mm.   | <input type="checkbox"/> |
| <b>Floor nozzles</b>                          |    |             |   |                          |
| Aluminium floor nozzle 370 mm DN40            | 20 | 9.989-683.0 | Floor nozzle, 370 mm, made from aluminium. DN 40.   | <input type="checkbox"/> |
| Aluminium floor nozzle, el, 370 mm, DN40      | 21 | 9.989-682.0 | Floor nozzle, 370 mm, made from aluminium. Electroconductive. DN 40.                                      | <input type="checkbox"/> |
| Aluminium floor nozzle 200 mm DN50            | 22 | 9.981-426.0 | Floor nozzle, DN 50, with 200 mm suction width.   | <input type="checkbox"/> |
| Aluminium floor nozzle 370 mm DN50            | 23 | 9.989-664.0 | Floor nozzle. 370 mm, made from aluminium. Electroconductive. DN 50.                                      | <input type="checkbox"/> |
| Aluminium floor nozzle, el, 370 mm, DN50      | 24 | 9.987-612.0 | Electroconductive multi-purpose floor nozzle. 370 mm wide, DN 50.   | <input type="checkbox"/> |
| Aluminium floor nozzle 500 mm DN50            | 25 | 9.989-684.0 | Floor nozzle, 500 mm, made from aluminium. Electroconductive. DN 50.                                      | <input type="checkbox"/> |
| Aluminium floor nozzle, el, 500 mm, DN50      | 26 | 9.981-925.0 | Floor nozzle with 500 mm suction width and hinge. DN 50, electroconductive.                               | <input type="checkbox"/> |
| Stainless steel floor nozzle el 370 mm DN40   | 27 | 9.989-558.0 | Multi-purpose floor nozzle (370 mm), electroconductive, DN 40.  | <input type="checkbox"/> |
| Stainless steel floor nozzle el 370 mm DN50   | 28 | 9.988-115.0 | Floor nozzle (370 mm) made from stainless steel, electroconductive, DN 50.                                | <input type="checkbox"/> |

■ Included in the scope of supply. □ Available accessories.

## ACCESSORIES FOR IVR 50/24-2 SC

### 9.989-410.0



|   |    | Order no.   | Description  |                          |
|---|----|-------------|--|--------------------------|
| <b>NOZZLES</b>                                  |    |             |  |                          |
| <b>Floor nozzles</b>                            |    |             |  |                          |
| Floor nozzle rubber strip oil-resistant. 220 mm | 29 | 9.981-923.0 | Squeegee with plastic strip for floor nozzle, 220 mm wide.   | <input type="checkbox"/> |
| Floor nozzle rubber strip 370 mm                | 30 | 9.981-914.0 | Squeegee with profiled strip for floor nozzle, 370 mm wide.  | <input type="checkbox"/> |
| Floor nozzle rubber strip 500 mm                | 31 | 9.981-915.0 | Oil-resistant squeegee with profiled strip for floor nozzle, 500 mm wide.                              | <input type="checkbox"/> |
| Floor nozzle brush strip el. 370 mm             | 32 | 9.984-939.0 | Electroconductive squeegee for floor nozzle, 370 mm wide.  | <input type="checkbox"/> |
| Floor nozzle brush strip 500 mm                 | 33 | 9.980-764.0 | Brush strip set for floor nozzle 500 mm, with profiled strip.  | <input type="checkbox"/> |
| <b>Crevice nozzles</b>                          |    |             |  |                          |
| Crevice nozzle PP 15 mm × 145 mm DN50           | 34 | 9.988-117.0 | Electroconductive, flat multi-purpose crevice nozzle made from plastic, DN 52.                         | <input type="checkbox"/> |
| Crevice nozzle PU 22 mm × 175 mm DN50           | 35 | 9.981-482.0 | Crevice nozzle made from PU, DN 50.  | <input type="checkbox"/> |
| Crevice nozzle 18 mm × 120 mm DN50              | 36 | 9.981-442.0 | Electroconductive crevice nozzle made from sheet steel, DN 50, with 17 mm slot width.                  | <input type="checkbox"/> |
| Crevice nozzle 25 mm × 120 mm DN50              | 37 | 9.981-465.0 | Electroconductive crevice nozzle made from sheet steel, DN 50, with 25 mm slot width.                  | <input type="checkbox"/> |
| <b>Flexible crevice nozzles</b>                 |    |             |  |                          |
| Flexible crevice nozzle silicone 65 mm DN50     | 38 | 9.988-403.0 | Flexible crevice nozzle made from silicone, DN 50.   | <input type="checkbox"/> |
| Flexible crevice nozzle 11 mm × 58 mm DN40      | 39 | 9.989-681.0 | Electroconductive and flexible crevice nozzle, 11 × 58 mm.   | <input type="checkbox"/> |
| Flexible crevice nozzle 20 mm × 45 mm DN40      | 40 | 9.981-423.0 | Flexible and electroconductive crevice nozzle made from galvanised steel with 20 mm slot width, DN 40. | <input type="checkbox"/> |
| Flexible crevice nozzle 12 mm × 45 mm DN50      | 41 | 9.981-424.0 | Flexible, electroconductive galvanised crevice nozzle, DN 50, with 13 mm slot width.                   | <input type="checkbox"/> |
| Flexible crevice nozzle 20 mm × 45 mm DN50      | 42 | 9.981-425.0 | Flexible and electroconductive crevice nozzle made from galvanised steel with 20 mm slot width, DN 50. | <input type="checkbox"/> |

■ Included in the scope of supply. □ Available accessories.

## ACCESSORIES FOR IVR 50/24-2 SC 9.989-410.0



|  |    | Order no.   | Description  |                          |
|--|----|-------------|--|--------------------------|
| <b>NOZZLES</b>                                     |    |             |  |                          |
| <b>Surface nozzles</b>                             |    |             |  |                          |
| Silicone surface nozzle 120 mm DN40                | 43 | 9.988-118.0 | Electroconductive rubber nozzle, angled, DN 40, suitable for use with foods. | <input type="checkbox"/> |
| Silicone surface nozzle 120 mm DN50                | 44 | 9.988-119.0 | Electroconductive rubber nozzle, angled, DN 50, suitable for use with foods. | <input type="checkbox"/> |
| Aluminium surface nozzle, 150 mm, DN 40            | 45 | 9.989-666.0 | Surface nozzle, 150 mm, made from aluminium. DN 40.                          | <input type="checkbox"/> |
| Aluminium surface nozzle 150 mm DN50               | 46 | 9.989-665.0 | Surface nozzle, 150 mm, made from aluminium. DN 50.                          | <input type="checkbox"/> |
| <b>Liquid nozzles</b>                              |    |             |  |                          |
| Liquid nozzle 900 mm DN50                          | 47 | 9.981-427.0 | Bypass nozzle, DN 50, overall length: 1000 mm.                               | <input type="checkbox"/> |
| <b>Borehole nozzles</b>                            |    |             |  |                          |
| Blind hole nozzle DN40                             | 48 | 9.989-671.0 | 90° curved blind hole nozzle with 60 mm diameter.                            | <input type="checkbox"/> |
| Blind hose nozzle angled 60° DN40                  | 49 | 9.989-669.0 | 90° curved blind hole nozzle with 48 mm diameter. DN 40.                     | <input type="checkbox"/> |
| Blind hose nozzle angled 90° DN40                  | 50 | 9.989-667.0 | 90° curved blind hole nozzle with 60 mm diameter. DN 40.                     | <input type="checkbox"/> |
| Blind hose nozzle angled 90° 200 mm extension DN40 | 51 | 9.989-670.0 | 90° curved blind hole nozzle with 48 mm diameter. DN 40.                     | <input type="checkbox"/> |
| <b>BRUSHES</b>                                     |    |             |  |                          |
| <b>Standard brushes</b>                            |    |             |  |                          |
| Standard brush 40 mm DN40                          | 52 | 9.981-431.0 | Flat brush nozzle DN 40.   | <input type="checkbox"/> |
| Standard brush 40 mm DN50                          | 53 | 9.981-432.0 | Flat brush nozzle DN 50.   | <input type="checkbox"/> |
| <b>End brushes</b>                                 |    |             |  |                          |
| End brush Ø 82 mm DN40                             | 54 | 9.989-609.0 | Electroconductive end brush with 82 mm diameter. DN 40.                      | <input type="checkbox"/> |
| End brush Ø 82 mm DN50                             | 55 | 9.989-608.0 | Electroconductive end brush with 82 mm diameter. DN 50.                      | <input type="checkbox"/> |
| <b>Surface brushes</b>                             |    |             |  |                          |
| Surface brush PP 24 mm DN40                        | 56 | 9.989-610.0 | Electroconductive surface brush. DN 40.                                      | <input type="checkbox"/> |

Available accessories.

## ACCESSORIES FOR IVR 50/24-2 SC

### 9.989-410.0



57-58



59-60



61



62-63



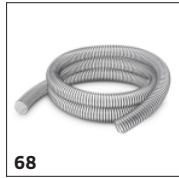
64



65



66-67



68



69-70

|                                       | Order no. | Description |   |
|---------------------------------------|-----------|-------------|---|
| <b>BRUSHES</b>                        |           |             |   |
| <b>Surface brushes</b>                |           |             |   |
| Surface brush 300 mm DN40             | 57        | 9.981-911.0 | Vacuum brush, 300 mm, with 45° connection, with star screw, horsehair bristles. <input type="checkbox"/>  |
| Surface brush 300 mm DN50             | 58        | 9.981-912.0 | <input type="checkbox"/>  |
| <b>HOSES</b>                          |           |             |   |
| <b>PVC</b>                            |           |             |   |
| Hose PVC DN50 3 m                     | 59        | 9.989-615.0 | Electroconductive PVC hose, DN 50. Temperature-resistant up to 85 °C. Length: 3 m. <input type="checkbox"/>   |
| Hose PVC DN50 5 m                     | 60        | 9.989-616.0 | Electroconductive PVC hose, DN 50. Temperature-resistant up to 85 °C. Length: 5 m. <input type="checkbox"/>   |
| PVC hose DN50 15 m without connectors | 61        | 9.989-634.0 | PVC hose without tap adapter, DN 50. Electroconductive and temperature-resistant up to 85 °C. Length: 15 m. <input type="checkbox"/>                                  |
| <b>EVA hoses</b>                      |           |             |   |
| Hose EVA NW50 3 m                     | 62        | 9.988-090.0 | Electroconductive hose with NW50. Suitable for temperatures up to 65°C. Length: 3 m. <input type="checkbox"/>   |
| Hose EVA NW50 5 m                     | 63        | 9.988-091.0 | <input type="checkbox"/>  |
| EVA hose DN50 15 m without connectors | 64        | 9.989-631.0 | EVA hose without tap adapter, DN 50. Electroconductive and temperature-resistant up to 65 °C. Length: 15 m. <input type="checkbox"/>                                  |
| <b>Hose installation sets</b>         |           |             |   |
| Hose installation kit DN50            | 65        | 9.989-628.0 | Multipiece hose connection kit, DN 50. <input type="checkbox"/>   |
| <b>PU hoses</b>                       |           |             |   |
| Hose PU DN50 3 m                      | 66        | 9.989-619.0 | Oil-resistant, electroconductive PU hose, DN 50. Suitable for abrasive suction media and temperature-resistant up to 80 °C. Length: 3 m. <input type="checkbox"/>     |
| Hose PU DN50 5 m                      | 67        | 9.989-620.0 | Oil-resistant, electroconductive PU hose, DN 50. Suitable for abrasive suction media and temperature-resistant up to 80 °C. Length: 5 m. <input type="checkbox"/>     |
| PU hose DN50 15 m without connectors  | 68        | 9.989-638.0 | PU hose without tap adapter, DN 50. Electroconductive and temperature-resistant up to 80 °C. Length: 15 m. <input type="checkbox"/>                                   |
| <b>ME-PU-hoses</b>                    |           |             |   |
| Hose ME-PU DN50 3 m                   | 69        | 9.989-623.0 | Electroconductive, oil-resistant ME-PU hose, DN 50. Suitable for abrasive suction media and temperature-resistant up to 110 °C. Length: 3 m. <input type="checkbox"/> |
| Hose ME-PU DN50 5 m                   | 70        | 9.989-625.0 | Electroconductive, oil-resistant ME-PU hose, DN 50. Suitable for abrasive suction media and temperature-resistant up to 110 °C. Length: 5 m. <input type="checkbox"/> |

Available accessories.

## ACCESSORIES FOR IVR 50/24-2 SC

### 9.989-410.0



71



72-73



74



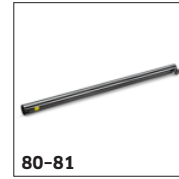
75



76-77



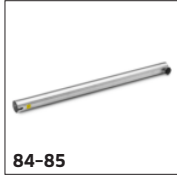
78-79



80-81



82-83



84-85

|  | Order no.      | Description   |                          |
|--|----------------|---|--------------------------|
| <b>HOSES</b>                             |                |   |                          |
| <b>ME-PU-hoses</b>                       |                |   |                          |
| ME-PU hose DN50 15 m without connectors  | 71 9.989-641.0 | Electroconductive, oil-resistant ME-PU hose without tap adapter, DN 50. Suitable for abrasive suction media and temperature-resistant up to 110 °C. Length: 15 m. | <input type="checkbox"/> |
| <b>HANDLES</b>                           |                |   |                          |
| Elbow aluminium 45° DN40                 | 72 9.989-544.0 | 45° curved handle made from aluminium, DN 40.   | <input type="checkbox"/> |
| Elbow aluminium 45° DN50                 | 73 9.989-547.0 | Handle with 45° bend. Made from aluminium, DN 50.   | <input type="checkbox"/> |
| Handle DN 40                             | 74 9.977-679.0 | 45° curved and electroconductive handle made from stainless steel. Inner cone DN 40.  | <input type="checkbox"/> |
| Handle DN 50                             | 75 9.977-678.0 | Electroconductive and 45° curved handle made from stainless steel. Inner cone DN 50.  | <input type="checkbox"/> |
| Stainless steel handle NW40              | 76 9.989-036.0 | Curved and electroconductive handle made from stainless steel. Angle 45°, inner cone NW 40.   | <input type="checkbox"/> |
| Stainless steel handle NW50              | 77 9.988-111.0 | Curved and electroconductive handle made from stainless steel. Angle 45°, inner cone NW 50.   | <input type="checkbox"/> |
| <b>SUCTION TUBES</b>                     |                |   |                          |
| Carbon suction tube 1500 mm DN40         | 78 9.989-552.0 | Very light carbon extension tube, electroconductive, DN 40. Length: 1500 mm.  | <input type="checkbox"/> |
| Carbon suction tube 1500 mm DN50         | 79 9.989-553.0 | Electroconductive, very light carbon extension tube. Inner cone DN 50, 1500 mm long.  | <input type="checkbox"/> |
| Suction tube 850 mm DN 40                | 80 9.977-525.0 | Steel extension tube, electroconductive, DN 40. Length: 850 mm.   | <input type="checkbox"/> |
|  | 81 9.977-531.0 | 850 mm long extension tube made from steel. Electroconductive and with inner cone DN 50.  | <input type="checkbox"/> |
| Aluminium suction tube 1500 mm NW40      | 82 9.989-038.0 | Aluminium extension tube, electroconductive, NW 40. Length: 1500 mm.  | <input type="checkbox"/> |
| Aluminium suction tube 1500 mm NW50      | 83 9.989-035.0 | Electrically conductive suction tube (1500 mm) made of aluminium with 50 mm diameter.   | <input type="checkbox"/> |
| Stainless steel suction tube 850 mm NW40 | 84 9.989-039.0 | Stainless steel extension tube, electroconductive, NW 40. Length: 850 mm.   | <input type="checkbox"/> |

Available accessories.



## ACCESSORIES FOR IVR 50/24-2 SC

### 9.989-410.0



|  |    | Order no.   | Description  |                          |
|--|----|-------------|--|--------------------------|
| <b>SUCTION TUBES</b>                         |    |             |  |                          |
| Stainless steel suction tube 850 mm NW50     | 85 | 9.988-114.0 | Electroconductive extension tube made from stainless steel. Inner cone NW 50.                | <input type="checkbox"/> |
| <b>ADAPTERS / REDUCERS / DISTRIBUTORS</b>    |    |             |  |                          |
| <b>Accessories adapter</b>                   |    |             |  |                          |
| Adapter accessories DN 50 to DN 51           | 86 | 9.989-603.0 | Steel adapter for connection of DN 50 to DN 51. Electroconductive.                           | <input type="checkbox"/> |
| Adapter accessories DN 51 to DN 50           | 87 | 9.989-601.0 | Steel adapter for connection of DN 51 to DN 50. Electroconductive.                           | <input type="checkbox"/> |
| Adapter accessories DN50 to DN61             | 88 | 9.989-602.0 | Steel adapter for connection of DN 50 to DN 61. Electroconductive.                           | <input type="checkbox"/> |
| Adapter accessories DN 61 to DN 50           | 89 | 9.989-604.0 | Steel adapter for connection of DN 61 to DN 50. Electroconductive.                           | <input type="checkbox"/> |
| <b>Reducers/expanders</b>                    |    |             |  |                          |
| Reduction DN50 to DN40                       | 90 | 9.981-231.0 | Reducer from DN 50 to DN 40. Material: Steel. Electroconductive.                             | <input type="checkbox"/> |
| <b>Expander</b>                              |    |             |  |                          |
| Expansion DN50 to DN70                       | 91 | 9.981-921.0 | Reducer from external cone DN 50 to internal cone DN 70. Material: Steel. Electroconductive. | <input type="checkbox"/> |
| <b>Distributor</b>                           |    |             |  |                          |
| Y-piece fitting DN50 to DN40                 | 92 | 9.981-149.0 | Manifold, electroconductive, steel, DN 50/40/40.   | <input type="checkbox"/> |
| <b>PRE-SEPARATORS</b>                        |    |             |  |                          |
| <b>Pre-separator</b>                         |    |             |  |                          |
| Pre-separator Ef solid materials 100 l DN70  | 93 | 9.982-238.0 | Mobile pre-separator station with 110 l volume and emptying flap.                            | <input type="checkbox"/> |
| Pre-separator dust 40 l DN40                 | 94 | 9.989-687.0 |  | <input type="checkbox"/> |
| Pre-separator dust 60 l DN50                 | 95 | 9.989-688.0 |  | <input type="checkbox"/> |
| Pre-separator drum 200 l                     | 96 | 9.989-685.0 | Standard drum which complies with the ISO 15750-2 standard.                                  | <input type="checkbox"/> |
| <b>Pre-separator lid</b>                     |    |             |  |                          |
| Pre-separator cover Op liquids ø 517 mm DN70 | 97 | 9.981-666.0 | Pre-separator cover DN 70. Suitable for containers with 517 mm diameter.                     | <input type="checkbox"/> |
| Pre-separator cover Op liquids ø 575 mm DN70 | 98 | 9.981-662.0 | Pre-separator cover DN 70 for 200 litre standard drum (9.989-685.0).                         | <input type="checkbox"/> |

Available accessories.

**ACCESSORIES FOR IVR 50/24-2 SC****9.989-410.0****97-100**

|   |     | <b>Order no.</b> | <b>Description</b>   |                          |
|---|-----|------------------|--|--------------------------|
| <b>PRE-SEPARATORS</b>                             |     |                  |  |                          |
| <b>Pre-separator lid</b>                          |     |                  |  |                          |
| Pre-separator cover solid materials ø 517 mm DN70 | 99  | 9.981-665.0      | Pre-separator cover DN 70. Suitable for containers with 517 mm diameter. | <input type="checkbox"/> |
| Pre-separator cover solid materials ø 575 mm DN70 | 100 | 9.981-661.0      | Pre-separator cover DN 70 for 200 litre standard drum (9.989-685.0).     | <input type="checkbox"/> |

 Available accessories.