

## IVR 100/24-2 SC

With a rated input power of 2.4 kW, the AC-powered IVR 100/24-2 Sc impressively vacuums combustible dusts and fine swarf. For installation in non-explosive areas.



### Order no.

9.989-414.0

- Compact construction style that takes up very little floor space
- Manual filter cleaning

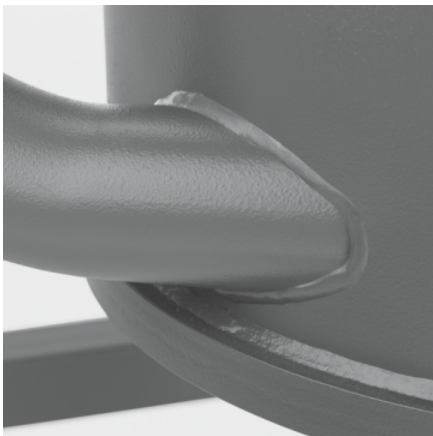
### Technical data

<b>EAN code</b>		4054278695020
<b>Supply voltage</b>	<b>Ph / V / Hz</b>	1 / 220 - 240 / 50 - 60
<b>Air flow</b>	<b>l/s / m³/h</b>	148 / 532
<b>Vacuum</b>	<b>mbar / kPa</b>	230 / 23
<b>Container content</b>	<b>l</b>	100
<b>Rated input power</b>	<b>kW</b>	2.4
<b>Vacuuming type</b>		Electric
<b>Connection nominal diameter</b>		ID 50
<b>Accessory nominal diameter</b>		ID 50 / ID 40
<b>Sound pressure level</b>	<b>dB(A)</b>	68
<b>Main filter dust class</b>		M
<b>Filter area for main filter</b>	<b>m²</b>	1.75
<b>Weight without accessories</b>	<b>kg</b>	103
<b>Weight incl. packaging</b>	<b>kg</b>	111
<b>Dimensions (L × W × H)</b>	<b>mm</b>	915 × 760 × 1580

Users must receive training on this device.

### Equipment

<b>Container emptying</b>	Set-down trolley
■ Included in the scope of supply.	



### Particularly robust, particularly flexible

- With practical, movable suction hose port/pipe bend.
- With numerous options for accessory storage.
- Machine and chassis very robust and equipped with high wall thicknesses.



### Fitted with two very quiet fan motors

- For powerful suction power and optimum cleaning performance.
- Fans can be switched on separately for individual suction power as required.
- Very quiet drive head ensures that the cooling air is blown out evenly.



### Convenient, manual filter cleaning

- Effortless operation by means of an ergonomically placed lever if required.
- Extends the life of the filter and thus reduces the maintenance effort.
- Identical cleaning results, regardless of the amount of force used.

## ACCESSORIES FOR IVR 100/24-2 SC

### 9.989-414.0



		Order no.	Description	
<b>ACCESSORY SETS</b>				
<b>Accessory kit for liquids</b>				
Liquid accessory kit DN 40	1	9.989-660.0	Accessory kit DN 40 for liquid vacuums: PU hose 3 m (9.989-617.0), handle (9.977-679.0), standard nozzle (9.988-401.0), reducer (9.989-690.0), surface nozzle 120 mm (9.988-118.0).	<input type="checkbox"/>
Liquid accessory kit DN50	2	9.989-661.0	Accessory kit DN 50 for liquid vacuums: PU hose 3 m (9.989-619.0), handle (9.977-678.0), standard nozzle (9.988-402.0), reducer (9.977-772.0), surface nozzle 120 mm (9.988-119.0).	<input type="checkbox"/>
<b>Accessory kit for liquids/chips</b>				
Accessory kit for liquids / sawdust DN40	3	9.989-657.0	Accessory kit DN40 for liquid vacuum and swarf vacuum: 3 m ME-PU hose (9.989-621.0), handle (9.977-679.0), standard nozzle (9.989-674.0), reducer (9.989-690.0), surface nozzle (9.988-118.0).	<input type="checkbox"/>
Accessory kit for liquids/chips DN50	4	9.989-658.0	Accessory kit DN50 for liquid vacuum and swarf vacuum: 3 m ME-PU hose (9.989-623.0), handle (9.977-678.0), standard nozzle (9.989-673.0), reducer (9.977-772.0), surface nozzle (9.988-119.0).	<input type="checkbox"/>
<b>Accessory kit for solids/dust</b>				
Accessory kit for solids/dust DN 40	5	9.989-659.0	Accessory kit DN 40 for industrial vacuum cleaners (solids and dust): EVA hose (9.988-088.0), handle (9.977-679.0), standard nozzle (9.988-401.0), reducer (9.989-690.0).	<input type="checkbox"/>
Accessory kit for solids/dust DN 50	6	9.989-662.0	Accessory kit DN 50 for industrial vacuum cleaners (solids and dust): EVA hose (9.988-090.0), handle (9.977-678.0), standard nozzle (9.988-402.0), reducer (9.977-772.0).	<input type="checkbox"/>
<b>NOZZLES</b>				
<b>Standard nozzles</b>				
Standard PVC nozzle DN40	7	9.989-674.0	Electroconductive standard PVC nozzle. DN 40.	<input type="checkbox"/>
Standard PVC nozzle DN50	8	9.989-673.0	Electroconductive standard PVC nozzle. DN 50.	<input type="checkbox"/>
Standard nozzle silicone DN40	9	9.988-401.0	Stretchy standard nozzle made from silicone, inner cone DN 40.	<input type="checkbox"/>
Standard nozzle silicone DN50	10	9.988-402.0		<input type="checkbox"/>
Standard nozzle cuttable rubber DN40	11	9.989-677.0	Standard nozzle, electroconductive, made from cuttable rubber. DN 40.	<input type="checkbox"/>
Standard nozzle cuttable rubber DN50	12	9.989-675.0	Standard nozzle, electroconductive, made from cuttable rubber. DN 50.	<input type="checkbox"/>
Standard aluminium nozzle DN40	13	9.980-748.0	Diagonal nozzle made from anodised aluminium, electroconductive, DN 40.	<input type="checkbox"/>
Standard aluminium nozzle DN50	14	9.980-749.0	Diagonal nozzle made from anodised aluminium, electroconductive, DN 50.	<input type="checkbox"/>

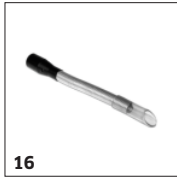
■ Included in the scope of supply. □ Available accessories.

## ACCESSORIES FOR IVR 100/24-2 SC

### 9.989-414.0



15



16



17-18



19, 22-23



20, 26



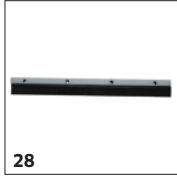
21



24-25



27



28

		Order no.	Description	
<b>NOZZLES</b>				
<b>Flexible standard nozzles</b>				
Standard nozzle flexible PVC DN40	15	9.981-420.0	Electroconductive, flexible round nozzle made from galvanised steel, with rubber mouthpiece DN 30.	<input type="checkbox"/>
Standard nozzle flexible PVC DN50	16	9.981-421.0	Electroconductive, flexible round nozzle made from galvanised steel, DN 50, with rubber mouthpiece DN 30.	<input type="checkbox"/>
Standard nozzle, flexible, angled 90° PP DN40	17	9.981-429.0	Flexible, electroconductive angled nozzle, DN 40, length: 800 mm.	<input type="checkbox"/>
Standard nozzle, flexible, angled 90° PP DN50	18	9.981-430.0	Flexible, electroconductive angled nozzle, DN 50, length: 800 mm.	<input type="checkbox"/>
<b>Floor nozzles</b>				
Aluminium floor nozzle 370 mm DN40	19	9.989-683.0	Floor nozzle, 370 mm, made from aluminium. DN 40.	<input type="checkbox"/>
Aluminium floor nozzle, el, 370 mm, DN40	20	9.989-682.0	Floor nozzle, 370 mm, made from aluminium. Electroconductive. DN 40.	<input type="checkbox"/>
Aluminium floor nozzle 200 mm DN50	21	9.981-426.0	Floor nozzle, DN 50, with 200 mm suction width.	<input type="checkbox"/>
Aluminium floor nozzle 370 mm DN50	22	9.989-664.0	Floor nozzle. 370 mm, made from aluminium. Electroconductive. DN 50.	<input type="checkbox"/>
Aluminium floor nozzle, el, 370 mm, DN50	23	9.987-612.0	Electroconductive multi-purpose floor nozzle. 370 mm wide, DN 50.	<input type="checkbox"/>
Aluminium floor nozzle 500 mm DN50	24	9.989-684.0	Floor nozzle, 500 mm, made from aluminium. Electroconductive. DN 50.	<input type="checkbox"/>
Aluminium floor nozzle, el, 500 mm, DN50	25	9.981-925.0	Floor nozzle with 500 mm suction width and hinge. DN 50, electroconductive.	<input type="checkbox"/>
Stainless steel floor nozzle el 370 mm DN40	26	9.989-558.0	Multi-purpose floor nozzle (370 mm), electroconductive, DN 40.	<input type="checkbox"/>
Stainless steel floor nozzle el 370 mm DN50	27	9.988-115.0	Floor nozzle (370 mm) made from stainless steel, electroconductive, DN 50.	<input type="checkbox"/>
Floor nozzle rubber strip oil-resistant, 220 mm	28	9.981-923.0	Squeegee with plastic strip for floor nozzle, 220 mm wide.	<input type="checkbox"/>

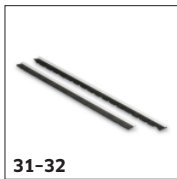
■ Included in the scope of supply. □ Available accessories.

## ACCESSORIES FOR IVR 100/24-2 SC

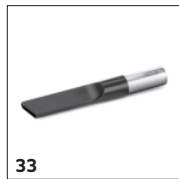
### 9.989-414.0



29-30



31-32



33



34



35-36



37



38-39, 41



40



42-43

	Order no.	Description	
<b>NOZZLES</b>			
<b>Floor nozzles</b>			
Floor nozzle rubber strip 370 mm	29	9.981-914.0	Squeegee with profiled strip for floor nozzle, 370 mm wide. <input type="checkbox"/>
Floor nozzle rubber strip 500 mm	30	9.981-915.0	Oil-resistant squeegee with profiled strip for floor nozzle, 500 mm wide. <input type="checkbox"/>
Floor nozzle brush strip el. 370 mm	31	9.984-939.0	Electroconductive squeegee for floor nozzle, 370 mm wide. <input type="checkbox"/>
Floor nozzle brush strip 500 mm	32	9.980-764.0	Brush strip set for floor nozzle 500 mm, with profiled strip. <input type="checkbox"/>
<b>Crevice nozzles</b>			
Crevice nozzle PP 15 mm × 145 mm DN50	33	9.988-117.0	Electroconductive, flat multi-purpose crevice nozzle made from plastic, DN 52. <input type="checkbox"/>
Crevice nozzle PU 22 mm × 175 mm DN50	34	9.981-482.0	Crevice nozzle made from PU, DN 50. <input type="checkbox"/>
Crevice nozzle 18 mm × 120 mm DN50	35	9.981-442.0	Electroconductive crevice nozzle made from sheet steel, DN 50, with 17 mm slot width. <input type="checkbox"/>
Crevice nozzle 25 mm × 120 mm DN50	36	9.981-465.0	Electroconductive crevice nozzle made from sheet steel, DN 50, with 25 mm slot width. <input type="checkbox"/>
<b>Flexible crevice nozzles</b>			
Flexible crevice nozzle silicone 65 mm DN50	37	9.988-403.0	Flexible crevice nozzle made from silicone, DN 50. <input type="checkbox"/>
Flexible crevice nozzle 11 mm × 58 mm DN40	38	9.989-681.0	Electroconductive and flexible crevice nozzle, 11 × 58 mm. <input type="checkbox"/>
Flexible crevice nozzle 20 mm × 45 mm DN40	39	9.981-423.0	Flexible and electroconductive crevice nozzle made from galvanised steel with 20 mm slot width, DN 40. <input type="checkbox"/>
Flexible crevice nozzle 12 mm × 45 mm DN50	40	9.981-424.0	Flexible, electroconductive galvanised crevice nozzle, DN 50, with 13 mm slot width. <input type="checkbox"/>
Flexible crevice nozzle 20 mm × 45 mm DN50	41	9.981-425.0	Flexible and electroconductive crevice nozzle made from galvanised steel with 20 mm slot width, DN 50. <input type="checkbox"/>
<b>Surface nozzles</b>			
Silicone surface nozzle 120 mm DN40	42	9.988-118.0	Electroconductive rubber nozzle, angled, DN 40, suitable for use with foods. <input type="checkbox"/>

■ Included in the scope of supply. □ Available accessories.



## ACCESSORIES FOR IVR 100/24-2 SC 9.989-414.0



		Order no.	Description	
<b>NOZZLES</b>				
<b>Surface nozzles</b>				
Silicone surface nozzle 120 mm DN50	43	9.988-119.0	Electroconductive rubber nozzle, angled, DN 50, suitable for use with foods.	<input type="checkbox"/>
Aluminium surface nozzle, 150 mm, DN 40	44	9.989-666.0	Surface nozzle, 150 mm, made from aluminium. DN 40.	<input type="checkbox"/>
Aluminium surface nozzle 150 mm DN50	45	9.989-665.0	Surface nozzle, 150 mm, made from aluminium. DN 50.	<input type="checkbox"/>
<b>Liquid nozzles</b>				
Liquid nozzle 900 mm DN50	46	9.981-427.0	Bypass nozzle, DN 50, overall length: 1000 mm.	<input type="checkbox"/>
<b>Borehole nozzles</b>				
Blind hole nozzle DN40	47	9.989-671.0	90° curved blind hole nozzle with 60 mm diameter.	<input type="checkbox"/>
Blind hose nozzle angled 60° DN40	48	9.989-669.0	90° curved blind hole nozzle with 48 mm diameter. DN 40.	<input type="checkbox"/>
Blind hose nozzle angled 90° DN40	49	9.989-667.0	90° curved blind hole nozzle with 60 mm diameter. DN 40.	<input type="checkbox"/>
Blind hose nozzle angled 90° 200 mm extension DN40	50	9.989-670.0	90° curved blind hole nozzle with 48 mm diameter. DN 40.	<input type="checkbox"/>
<b>BRUSHES</b>				
<b>Standard brushes</b>				
Standard brush 40 mm DN40	51	9.981-431.0	Flat brush nozzle DN 40.	<input type="checkbox"/>
Standard brush 40 mm DN50	52	9.981-432.0	Flat brush nozzle DN 50.	<input type="checkbox"/>
<b>End brushes</b>				
End brush Ø 82 mm DN40	53	9.989-609.0	Electroconductive end brush with 82 mm diameter. DN 40.	<input type="checkbox"/>
End brush Ø 82 mm DN50	54	9.989-608.0	Electroconductive end brush with 82 mm diameter. DN 50.	<input type="checkbox"/>
<b>Surface brushes</b>				
Surface brush PP 24 mm DN40	55	9.989-610.0	Electroconductive surface brush. DN 40.	<input type="checkbox"/>
Surface brush 300 mm DN40	56	9.981-911.0	Vacuum brush, 300 mm, with 45° connection, with star screw, horsehair bristles.	<input type="checkbox"/>

Available accessories.

## ACCESSORIES FOR IVR 100/24-2 SC

### 9.989-414.0



		Order no.	Description	
<b>BRUSHES</b>				
<b>Surface brushes</b>				
Surface brush 300 mm DN50	57	9.981-912.0	Vacuum brush, 300 mm, with 45° connection, with star screw, horsehair bristles.	<input type="checkbox"/>
<b>HOSES</b>				
<b>PVC</b>				
Hose PVC DN50 3 m	58	9.989-615.0	Electroconductive PVC hose, DN 50. Temperature-resistant up to 85 °C. Length: 3 m.	<input type="checkbox"/>
Hose PVC DN50 5 m	59	9.989-616.0	Electroconductive PVC hose, DN 50. Temperature-resistant up to 85 °C. Length: 5 m.	<input type="checkbox"/>
PVC hose DN50 15 m without connectors	60	9.989-634.0	PVC hose without tap adapter, DN 50. Electroconductive and temperature-resistant up to 85 °C. Length: 15 m.	<input type="checkbox"/>
<b>EVA hoses</b>				
Hose EVA NW50 3 m	61	9.988-090.0	Electroconductive hose with NW50. Suitable for temperatures up to 65°C. Length: 3 m.	<input type="checkbox"/>
Hose EVA NW50 5 m	62	9.988-091.0		<input type="checkbox"/>
EVA hose DN50 15 m without connectors	63	9.989-631.0	EVA hose without tap adapter, DN 50. Electroconductive and temperature-resistant up to 65 °C. Length: 15 m.	<input type="checkbox"/>
<b>Hose installation sets</b>				
Hose installation kit DN50	64	9.989-628.0	Multipiece hose connection kit, DN 50.	<input type="checkbox"/>
<b>PU hoses</b>				
Hose PU DN50 3 m	65	9.989-619.0	Oil-resistant, electroconductive PU hose, DN 50. Suitable for abrasive suction media and temperature-resistant up to 80 °C. Length: 3 m.	<input type="checkbox"/>
Hose PU DN50 5 m	66	9.989-620.0	Oil-resistant, electroconductive PU hose, DN 50. Suitable for abrasive suction media and temperature-resistant up to 80 °C. Length: 5 m.	<input type="checkbox"/>
PU hose DN50 15 m without connectors	67	9.989-638.0	PU hose without tap adapter, DN 50. Electroconductive and temperature-resistant up to 80 °C. Length: 15 m.	<input type="checkbox"/>
<b>ME-PU-hoses</b>				
Hose ME-PU DN50 3 m	68	9.989-623.0	Electroconductive, oil-resistant ME-PU hose, DN 50. Suitable for abrasive suction media and temperature-resistant up to 110 °C. Length: 3 m.	<input type="checkbox"/>
Hose ME-PU DN50 5 m	69	9.989-625.0	Electroconductive, oil-resistant ME-PU hose, DN 50. Suitable for abrasive suction media and temperature-resistant up to 110 °C. Length: 5 m.	<input type="checkbox"/>
ME-PU hose DN50 15 m without connectors	70	9.989-641.0	Electroconductive, oil-resistant ME-PU hose without tap adapter, DN 50. Suitable for abrasive suction media and temperature-resistant up to 110 °C. Length: 15 m.	<input type="checkbox"/>

Available accessories.

## ACCESSORIES FOR IVR 100/24-2 SC

### 9.989-414.0



71-72



73



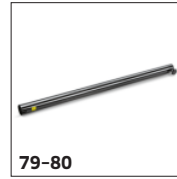
74



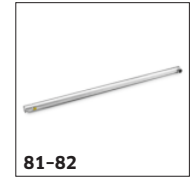
75-76



77-78



79-80



81-82



83-84

	Order no.	Description	
<b>HANDLES</b>			
Elbow aluminium 45° DN40	71 9.989-544.0	45° curved handle made from aluminium, DN 40.	<input type="checkbox"/>
Elbow aluminium 45° DN50	72 9.989-547.0	Handle with 45° bend. Made from aluminium, DN 50.	<input type="checkbox"/>
Handle DN 40	73 9.977-679.0	45° curved and electroconductive handle made from stainless steel. Inner cone DN 40.	<input type="checkbox"/>
Handle DN 50	74 9.977-678.0	Electroconductive and 45° curved handle made from stainless steel. Inner cone DN 50.	<input type="checkbox"/>
Stainless steel handle NW40	75 9.989-036.0	Curved and electroconductive handle made from stainless steel. Angle 45°, inner cone NW 40.	<input type="checkbox"/>
Stainless steel handle NW50	76 9.988-111.0	Curved and electroconductive handle made from stainless steel. Angle 45°, inner cone NW 50.	<input type="checkbox"/>
<b>SUCTION TUBES</b>			
Carbon suction tube 1500 mm DN40	77 9.989-552.0	Very light carbon extension tube, electroconductive, DN 40. Length: 1500 mm.	<input type="checkbox"/>
Carbon suction tube 1500 mm DN50	78 9.989-553.0	Electroconductive, very light carbon extension tube. Inner cone DN 50, 1500 mm long.	<input type="checkbox"/>
Suction tube 850 mm DN 40	79 9.977-525.0	Steel extension tube, electroconductive, DN 40. Length: 850 mm.	<input type="checkbox"/>
	80 9.977-531.0	850 mm long extension tube made from steel. Electroconductive and with inner cone DN 50.	<input type="checkbox"/>
Aluminium suction tube 1500 mm NW40	81 9.989-038.0	Aluminium extension tube, electroconductive, NW 40. Length: 1500 mm.	<input type="checkbox"/>
Aluminium suction tube 1500 mm NW50	82 9.989-035.0	Electrically conductive suction tube (1500 mm) made of aluminium with 50 mm diameter.	<input type="checkbox"/>
Stainless steel suction tube 850 mm NW40	83 9.989-039.0	Stainless steel extension tube, electroconductive, NW 40. Length: 850 mm.	<input type="checkbox"/>
Stainless steel suction tube 850 mm NW50	84 9.988-114.0	Electroconductive extension tube made from stainless steel. Inner cone NW 50.	<input type="checkbox"/>

Available accessories.



## ACCESSORIES FOR IVR 100/24-2 SC

### 9.989-414.0



	Order no.	Description	
<b>ADAPTERS / REDUCERS / DISTRIBUTORS</b>			
<b>Accessories adapter</b>			
Adapter accessories DN 50 to DN 51	85 9.989-603.0	Steel adapter for connection of DN 50 to DN 51. Electroconductive.	<input type="checkbox"/>
Adapter accessories DN 51 to DN 50	86 9.989-601.0	Steel adapter for connection of DN 51 to DN 50. Electroconductive.	<input type="checkbox"/>
Adapter accessories DN50 to DN61	87 9.989-602.0	Steel adapter for connection of DN 50 to DN 61. Electroconductive.	<input type="checkbox"/>
Adapter accessories DN 61 to DN 50	88 9.989-604.0	Steel adapter for connection of DN 61 to DN 50. Electroconductive.	<input type="checkbox"/>
<b>Reducers/expanders</b>			
Reduction DN50 to DN40	89 9.981-231.0	Reducer from DN 50 to DN 40. Material: Steel. Electroconductive.	<input type="checkbox"/>
<b>Expander</b>			
Expansion DN50 to DN70	90 9.981-921.0	Reducer from external cone DN 50 to internal cone DN 70. Material: Steel. Electroconductive.	<input type="checkbox"/>
<b>Distributor</b>			
Y-piece fitting DN50 to DN40	91 9.981-149.0	Manifold, electroconductive, steel, DN 50/40/40.	<input type="checkbox"/>
<b>EMPTYING SUPPORTS</b>			
<b>Emptying bags</b>			
Disposal bag PE Ø 540 mm 100 l	92 9.989-607.0	For dust-free emptying: 5 PE emptying bags with 100 l volume. Diameter: 540 mm.	<input type="checkbox"/>
<b>PRE-SEPARATORS</b>			
<b>Pre-separator</b>			
Pre-separator Ef solid materials 100 l DN70	93 9.982-238.0	Mobile pre-separator station with 110 l volume and emptying flap.	<input type="checkbox"/>
Pre-separator dust 40 l DN40	94 9.989-687.0		<input type="checkbox"/>
Pre-separator dust 60 l DN50	95 9.989-688.0		<input type="checkbox"/>
Pre-separator drum 200 l	96 9.989-685.0	Standard drum which complies with the ISO 15750-2 standard.	<input type="checkbox"/>
<b>Pre-separator lid</b>			
Pre-separator cover Op liquids ø 517 mm DN70	97 9.981-666.0	Pre-separator cover DN 70. Suitable for containers with 517 mm diameter.	<input type="checkbox"/>
Pre-separator cover Op liquids ø 575 mm DN70	98 9.981-662.0	Pre-separator cover DN 70 for 200 litre standard drum (9.989-685.0).	<input type="checkbox"/>

Available accessories.

**ACCESSORIES FOR IVR 100/24-2 SC****9.989-414.0****97-100**

		<b>Order no.</b>	<b>Description</b>	
<b>PRE-SEPARATORS</b>				
<b>Pre-separator lid</b>				
Pre-separator cover solid materials ø 517 mm DN70	99	9.981-665.0	Pre-separator cover DN 70. Suitable for containers with 517 mm diameter.	<input type="checkbox"/>
Pre-separator cover solid materials ø 575 mm DN70	100	9.981-661.0	Pre-separator cover DN 70 for 200 litre standard drum (9.989-685.0).	<input type="checkbox"/>

 Available accessories.