



# WASHING

## HIGH SPIN WASHERS LOW AND MEDIUM CAPACITY LA-11/14 TP2

### CHARACTERISTICS

#### TP2

- User friendly and totally programmable 7"
- USB Connection. Online platform free of charge for programming, telemetry, data analysis...thanks to the IoT
- Videos on display (ads, instructions, etc.)
- 37 languages
- 8 dosing signals as standard

#### G FACTOR

- High G-Factor: G-FACTOR 500 for high spin washers

#### EFFICIENCY

- Intelligent consumption
- Optimal loading
- Water Recovery tanks ready: KRS
- Low water consumption

#### VERSATILITY

- Make to order: customisation
- OPL < > COIN
- Electric < > Hot water
- Drain valve < > Pump
- Wet cleaning features

#### CONNECTIVITY

- IoT - FagorKonnnect standard
- Remote technical service
- Management of laundries: OPL and COIN
- Remote payment

#### ERGONOMICS

- Biggest door diameters: Ø373
- Easy opening/closing system for door lock

#### MAINTENANCE

- Hinged control panel: easy and ergonomic access
- Technical menu: statistics for technicians and maintenance with external console (with console option)

#### OTHERS

- Grey skinplate outer casing
- Drum and tub in stainless steel AISI 304
- Detergent dispenser with 4 compartments
- Electronic control of imbalance with frequency control
- LOADING AID system: water and rotation control
- CB and WRAS approved product. Option ETL
- High spin washers with suspended drum

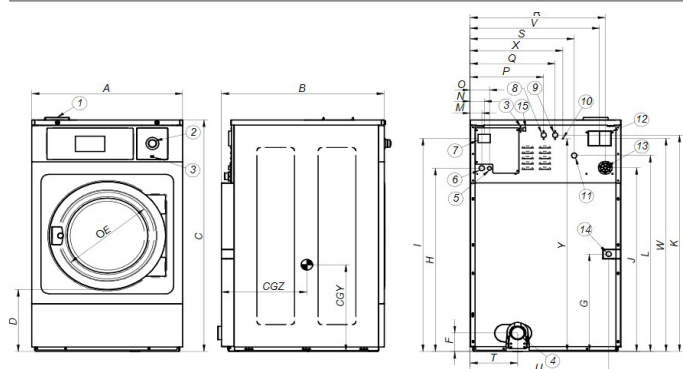
#### OPTIONS

- DQ-2 Dosing pump kit
- Extra dosing pump DB-1
- Double drain
- External double drain 3" (recommended for LA-11)
- Drain pump for models LA-11 and LA-14
- Normally closed valve
- Water FULL FLOW recirculation of bath water
- Levelling feet
- Auto Weight: automatic weighing sensor system on feet (Includes kit with 6 extra dosing signals)
- Relay card with 6 extra dosing signals: up to 14 signals
- Silicone gasket
- Reversible door opening
- Tropicalized model: protected board
- Steam kit to transform an E or HW heated machine into steam version
- Plinth for mops with drawer inox/skinplate
- Plinth to level all machines from top
- Plinth to align the doorbase at 850mm
- Stainless steel AISI 304 outer casing
- Stainless steel AISI 304 front panel
- Maritime volt. electric models: 440V III 50/60 (Hz no N)I
- Coin/token kits
- Auto unlock kit for the door



	U.	LA-11 TP2	LA-14 TP2		
<b>DRUM</b>					
Load capacity 1:9 / 1:10	Kg	11/10	14/13		
Volume	l	100	130		
Diameter	mm	532	620		
Depth	mm	425	430		
<b>GENERAL DETAILS</b>					
Washing speed / Spining speed	r.p.m.	50/1.300	50/1.204		
G Factor	-	500	500		
Maximum force transmitted	KN	2,08 ±0,75	2,49 ±1,05		
Frequency-dynamic force	Hz	16,7	16,7		
Noise level	dB	<70	<70		
Coin laundry version	-	Yes	Yes		
Double drain	-	No	Opt		
Weighing System / Tilting System	-	Opt/No	Opt/No		
SLUICE option	-	No	No		
<b>DOOR</b>					
Height center door / Height door	mm	630/370	700/440		
Diameter	mm	373	373		
<b>POWER</b>					
Motor	kW	0,75	1,1		
Electric heating power	kW	6	9		
Total electric power (electric model)	kW	6,25	9,4		
Total electric power (hw, steam model)	kW	0,75	1,1		
<b>CONNECTIONS</b>		<b>ELECTRIC</b>	<b>STEAM / HOT WATER</b>	<b>ELECTRIC</b>	<b>STEAM / HOT WATER.</b>
Tension 230V - I + N + T	N° x mm2 / A	2x6+T / 40A	2x1,5+T / 16A	2x10+T / 50A	2x1,5+T / 16A
Tension 230V - III + T	N° x mm2 / A	3x2,5+T / 20A	-	3x4+T / 32A	-
Tension 400V - III + N + T	N° x mm2 / A	4x1,5+T / 16A	-	4x1,5+T / 16A	-
Steam inlet (Steam model)	inch	1/2"		1/2"	
Maximum steam consumption (Steam model)	Kg/h	7		8,5	
Water inlet	inch	3/4"		3/4"	
Water main pressure	Kgs/cm <sup>2</sup>	2-4		2-4	
Maximum water consumption	Lit/h	62*/82**		80,6*/106,6**	
Drain	inch	3"		3"	
Drainage capacity	Lit/min	200		200	
<b>DIMENSIONS / PACKING DIMENSIONS</b>					
Net Width / Gross Width	mm	692/730		788/850	
Net Depth / Gross Depth	mm	788/1.000		869/1.010	
Net Height / Gross Height	mm	1.185/1.417		1.307/1.560	
Net weight / Gross weight	kg	230/239		250/283	
Volume	m <sup>3</sup>	1,03		1,34	

\*ECO program / \*\* Energetic 60°C



- 1- SOAP DISPENSER
- 2- EMERGENCY STOP
- 3- USB PORT
- 4- DRAIN
- 5- ELECTRIC CONNECTION TO LIQUID SOAP PUMPS
- 6- ELECTRICAL CONNECTION
- 7- MAIN SWITCH
- 8- AUXILIAR WATER INLET

- 9- HOT WATER INLET
- 10- EQUIPOTENTIAL CONNECTION
- 11- COLD WATER INLET
- 12- BLUR OUTPUT / WATER OVER-LOAD
- 13- LIQUID SOAP CONNECTION
- 14- STEAM CONNECTION
- 15- ETHERNET PORT

	A	B	C	D	E	F	G	H	I	J	K	L	M	N	O	P	Q	R	S	T	U	V	W	X	Y	CGY	CGZ	
LA-11	mm	692	788	1.185	370	373	125	354	913	1.085	916	1.100	985	61	74	101	292	352	610	448	226	626	580	1.080	442	1.145	424	577
LA-14	mm	788	869	1.307	440	373	243	385	1.034	1.202	1.037	1.221	1.106	61	74	101	385	445	706	544	243	718	676	1.202	485	1.201	450	651



# WASHING

## HIGH SPIN WASHERS LOW AND MEDIUM CAPACITY LA-18/22 TP2

### CHARACTERISTICS

#### TP2

- User friendly and totally programmable 7"
- USB Connection. Online platform free of charge for programming, telemetry, data analysis...thanks to the IoT
- Videos on display (ads, instructions, etc.)
- 37 languages
- 8 dosing signals as standard

#### G FACTOR

- High G-Factor: G-FACTOR 450-500

#### EFFICIENCY

- Intelligent consumption
- Optimal loading
- Water Recovery tanks ready: KRS
- Low water consumption

#### VERSATILITY

- Make to order: customisation
- OPL < > COIN
- Electric < > Hot water
- Drain valve < > Pump
- Wet cleaning features

#### CONNECTIVITY

- IoT - FagorKonnnect standard
- Remote technical service
- Management of laundries: OPL and COIN
- Remote payment

#### ERGONOMICS

- Biggest door diameters: Ø460
- Easy opening/closing system for door lock

#### MAINTENANCE

- Hinged control panel: easy and ergonomic access
- Technical menu: statistics for technicians and maintenance with external console (with console option)

#### OTHERS

- Grey skinplate outer casing
- Drum and tub in stainless steel AISI 304
- Detergent dispenser with 4 compartments
- Electronic control of imbalance with frequency control
- LOADING AID system: water and rotation control
- CB and WRAS approved product. Option ETL
- High spin washers with suspended drum

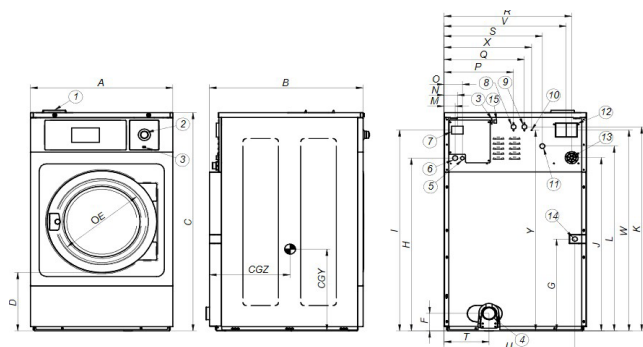
#### OPTIONS

- DQ-2 Dosing pump kit
- Extra dosing pump DB-1
- Double drain
- Normally closed valve
- WaterFULL FLOW recirculation of bath water
- Levelling feet
- Auto Weight: automatic weighing sensor system on feet (Includes kit with 6 extra dosing signals)
- Relay card with 6 extra dosing signals: up to 14 signals
- Silicone gasket
- Reversible door opening
- Tropicalized model: protected board
- Steam kit to transform an E or HW heated machine into steam version
- Plinth to level all machines from top
- Plinth to align the doorbase at 850mm)
- Plinth for mops with drawer inox/skinplate
- Stainless steel outer casing
- Stainless steel front panel
- Maritime voltage for electric models: 440V III 50/60 Hz No neutral
- Coin/token kit
- Auto unlock kit for the door



	U.	LA-18 TP2	LA-22 TP2		
<b>DRUM</b>					
Load capacity 1:9 / 1:10	Kg	20/18	25/22		
Volume	l	180	220		
Diameter	mm	700	700		
Depth	mm	470	560		
<b>GENERAL DETAILS</b>					
Washing speed / speed	r.p.m.	47/1.133	47/1.071		
G Factor	-	500	450		
Maximum force transmitted	KN	3,41 ±1,4	4,12 ±1,4		
Frequency-dynamic force	Hz	16	16		
Noise level	dB	<70	<70		
Coin laundry version	-	Yes	Yes		
Double drain	-	Opt.	Opt.		
Weighing System / Tilting System	-	Opt./No	Opt./No		
SLUICE option	-	No	No		
<b>DOOR</b>					
Height center door / Height door	mm	765/450	765/450		
Diameter	mm	460	460		
<b>POWER</b>					
Motor	kW	2,2	2,2		
Electric heating power	kW	12	12		
Total electric power (electric model)	kW	12,75	12,75		
Total electric power (hw, steam model)	kW	2,2	2,2		
<b>CONNECTIONS</b>		<b>ELECTRIC</b>	<b>STEAM / HOT WATER</b>	<b>ELECTRIC</b>	<b>STEAM / HOT WATER</b>
Tension 230V - I + N + T	N° x mm2 / A	2x16+T / 63A	2x1,5+T / 16A	2x16+T / 63A	2x1,5+T / 16A
Tension 230V - III + T	N° x mm2 / A	3x6+T / 40A	-	3x6+T / 40A	-
Tension 400V - III + N + T	N° x mm2 / A	4x4+T / 32A	-	4x4+T / 32A	-
Steam inlet (Steam model)	inch	1/2"		1/2"	
Maximum steam consumption (Steam model)	Kg/h	12		12	
Water inlet	inch	3/4"		3/4"	
Water main pressure	Kgs/cm <sup>2</sup>	2-4		2-4	
Maximum water consumption	Lit/h	111,6*/147,6**		136,4*/180,4**	
Drain	inch	3"		3"	
Drainage capacity	Lit/min	200		200	
<b>DIMENSIONS / PACKING DIMENSIONS</b>					
Net Width / Gross Width	mm	884 / 945		884/945	
Net Depth / Gross Depth	mm	913/1.030		1.003/1.140	
Net Height / Gross Height	mm	1.415 / 1.700		1.415/1.700	
Net weight / Gross weight	kg	360/393		380/413	
Volume	m3	1,65		1,83	

\*ECO program / \*\* Energetic 60°C



- 1- SOAP DISPENSER
- 2- EMERGENCY STOP
- 3- USB PORT
- 4- DRAIN
- 5- ELECTRIC CONNECTION TO LIQUID SOAP PUMPS
- 6- ELECTRICAL CONNECTION
- 7- MAIN SWITCH
- 8- AUXILIAR WATER INLET

- 9- HOT WATER INLET
- 10- EQUIPOTENTIAL CONNECTION
- 11- COLD WATER INLET
- 12- BLUR OUTPUT / WATER OVERLOAD
- 13- LIQUID SOAP CONNECTION
- 14- STEAM CONNECTION
- 15- ETHERNET PORT

		A	B	C	D	E	F	G	H	I	J	K	L	M	N	O	P	Q	R	S	T	U	V	W	X	Y	CGV	CGZ
LA-18	mm	884	913	1.415	450	460	95	380	1.135	1.303	1.138	1.322	1.207	61	74	101	429	509	802	640	348	814	772	1.303	569	1.297	464	702
LA-22	mm	884	1003	1.415	450	460	95	380	1.135	1.303	1.138	1.322	1.207	61	74	101	429	509	802	640	348	814	772	1.303	569	1.297	464	747



# WASHING

## HIGH SPIN WASHERS LOW AND MEDIUM CAPACITY LA-28 TP2

### CHARACTERISTICS

#### TP2

- User friendly and totally programmable 7" TP2 touch screen
- USB Connection. Online platform free of charge for programming, telemetry, data analysis... Thanks to the IoT
- Videos on display (ads, instructions, etc.)
- 37 languages
- 8 dosing signals as standard

#### G FACTOR

- High G-Factor: G-FACTOR 450

#### EFFICIENCY

- Intelligent consumption
- Optimal loading
- Water Recovery tanks ready: KRS
- Low water consumption

#### VERSATILITY

- Make to order: customisation
- OPL < > COIN
- Electric < > Hot water
- Drain valve < > Pump
- Wet cleaning features

#### CONNECTIVITY

- IoT - FagorKonnnect standard
- Remote technical service
- Management of laundries: OPL and COIN
- Remote payment

#### ERGONOMICS

- Biggest door diameters: Ø460
- Easy opening/closing system for door lock

#### MAINTENANCE

- Hinged control panel: easy and ergonomic access
- Technical menu: statistics for technicians and maintenance with external console (with console option)

#### OTHERS

- Grey skinplate outer casing
- Drum and tub in stainless steel AISI 304
- Detergent dispenser with 4 compartments
- Electronic control of imbalance with frequency control
- LOADING AID system: water and rotation control
- CB and WRAS approved product. Option ETL
- High spin washers with suspended drum

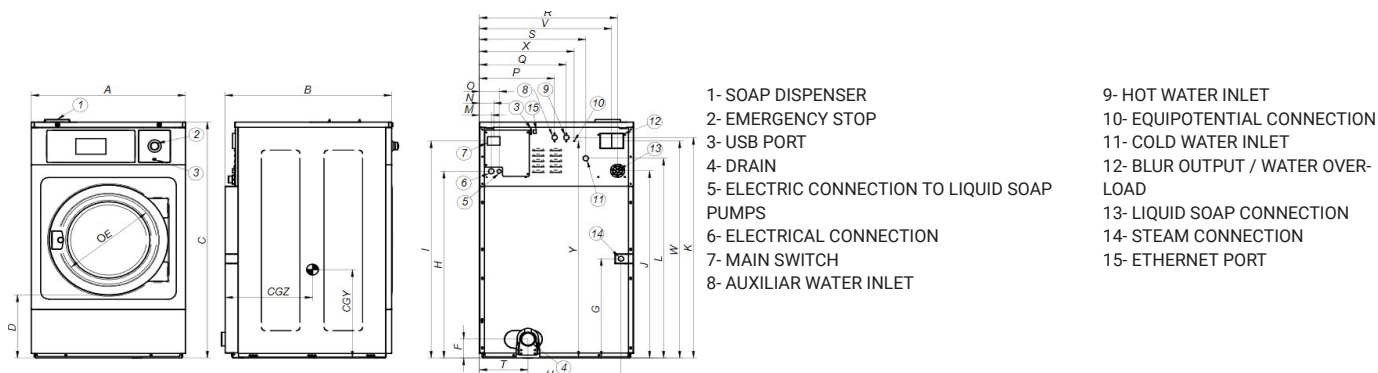
#### OPTIONS

- DQ-2 Dosing pump kit
- Extra dosing pump DB-1
- Double drain
- Normally closed valve
- WaterFULL FLOW recirculation of bath water
- Levelling feet
- Auto Weight: automatic weighing sensor system on feet (Includes kit with 6 extra dosing signals)
- Relay card with 6 extra dosing signals: up to 14 signals
- Silicone gasket
- Reversible door opening
- Tropicalized model: protected board
- Steam kit to transform an E or HW heated machine into steam version
- Plinth to level all machines from top
- Plinth to align the doorbase at 850mm)
- Plinth for mops with drawer inox/skinplate
- Stainless steel outer casing
- Stainless steel front panel
- Maritime voltage for electric models: 440V III 50/60 Hz No neutral
- Coin/token kit
- Auto unlock kit for the door



		U.	LA-28 TP2
<b>DRUM</b>			
Load capacity 1:9 / 1:10		Kg	31/28
Volume		l	280
Diameter		mm	770
Depth		mm	585
<b>DGENERAL DETAILS</b>			
Washing speed / Spining speed		r.p.m.	45/1.024
G Factor		-	450
Maximum force transmitted		KN	5,59 ± 1,75
Frequency-dynamic force		Hz	15
Noise level		dB	<70
Coin laundry version		-	Sí
Double drain		-	Opt.
Weighing System / Tilting System		-	Opt./No
SLUICE option		-	No
<b>DOOR</b>			
Height center door / Height door		mm	865/560
Diameter		mm	460
<b>POWER</b>			
Motor		kW	4
Electric heating power		kW	18
Total electric power (electric model)		kW	19,2
Total electric power (hw, steam model)		kW	4
<b>CONNECTIONS</b>		ELÉCTRICA	VAPOR / AGUA CAL.
Tension 230V - I + N + T	N° x mm2 / A	-	2x4+T / 32A
Tension 230V - III + T	N° x mm2 / A	3x16+T / 63A	-
Tension 400V - III + N + T	N° x mm2 / A	4x4+T / 32A	-
Steam inlet (Steam model)			3/4"
Maximum steam consumption (Steam model)	Kg/h		12
Water inlet			3/4"
Water main pressure	Kgs/cm <sup>2</sup>		2-4
Maximum water consumption	Lit/h		173,6*/229,6**
Drain			3"
Drainage capacity	Lit/min		200
<b>DIMENSIONS / PACKING DIMENSIONS</b>			
Net Width / Gross Width	mm		979/1.040
Net Depth / Gross Depth	mm		1.070/1.210
Net Height / Gross Height	mm		1.553/1.850
Net weight / Gross weight	kg		540/595
Volume	m <sup>3</sup>		2,33

\*ECO program / \*\* Energetic 60°C



	A	B	C	D	E	F	G	H	I	J	K	L	M	N	O	P	Q	R	S	T	U	V	W	X	Y	CGZ	CGZ
LA-28	979	1099	1553	560	460	133	490	1282	1450	1259	1465	1354	61	74	101	481	561	861	673	367	909	831	1424	624	1510	773	735



# WASHING

## HIGH SPIN WASHERS LOW AND MEDIUM CAPACITY LA-35C/45C TP2



### CHARACTERISTICS

#### TP2

- User friendly and totally programmable 7"
- USB Connection. Online platform free of charge for programming, telemetry, data analysis...thanks to the IoT
- Videos on display (ads, instructions)
- 37 languages
- 8 dosing signals as standard

#### G FACTOR

- High G-Factor: G-FACTOR 450

#### EFFICIENCY

- Intelligent consumption
- Optimal loading
- Water Recovery tanks ready: KRS
- Low water consumption

#### VERSATILITY

- Make to order: customisation
- OPL < > COIN
- Electric < > Hot water
- Drain valve < > Pump
- Wet cleaning features

#### CONNECTIVITY

- IoT - FagorKonnnect standard
- Remote technical service
- Management of laundries: OPL and COIN
- Remote payment

#### ERGONOMICS

- Biggest door diameters: Ø560
- Easy opening/closing system for door lock

#### MAINTENANCE

- Hinged control panel: easy and ergonomic access
- Technical menu: statistics for technicians and maintenance with external console (with console option)

#### OTHERS

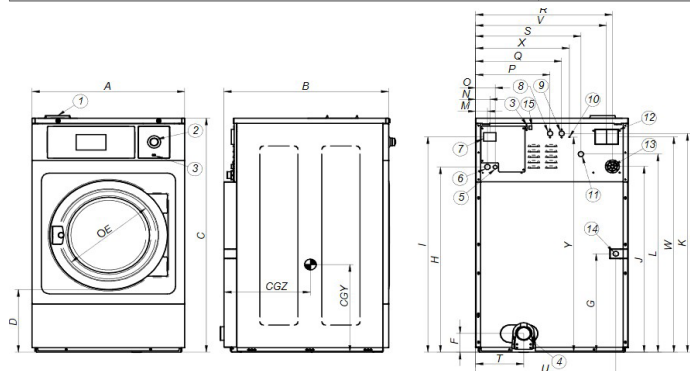
- Grey skinplate outer casing
- Drum and tub in stainless steel AISI 304
- Detergent dispenser with 4 compartments
- Electronic control of imbalance with frequency control
- LOADING AID system: water and rotation control
- CB and WRAS approved product. Option ETL
- High spin washers with suspended drum.

#### OPTIONS

- DQ-2 Dosing pump kit
- Extra dosing pump DB-1
- Double drain
- Normally closed valve
- Water FULL FLOW: recirculation of bath water
- Levelling feet
- Auto Weight: automatic weighing sensor system on feet (Includes kit with 6 extra dosing signals)
- Relay card with 6 extra dosing signals: up to 14 signals
- Reversible door opening
- Tropicalized model: protected board
- Steam kit to transform an E or HW heated machine into steam version
- Plinth to align loading height (door base at 850mm)
- Stainless steel AISI 304 outer casing
- Stainless steel AISI 304 front panel (LA-35C)
- Maritime voltage for electric models: 440V III 50/60 Hz
- No neutral
- Voltage 230 V III 50/60 Hz
- Coin/token kit
- Auto unlock kit for the door.

	U.	LA-35C TP2	LA-45C TP2		
<b>DRUM</b>					
Load capacity 1:9 / 1:10	Kg	39/35	50/45		
Volume	l	350	450		
Diameter	mm	860	860		
Depth	mm	602	720		
<b>GENERAL DETAILS</b>					
Washing speed / Spining speed	r.p.m.	42,5/966	42,5/966		
G Factor	-	450	450		
Maximum force transmitted	KN	7,36 ±2,45	7,36 ±2,45		
Frequency-dynamic force	Hz	14,3	14,3		
Sound level	dB	<70	<70		
Coin laundry version	-	Yes	No		
Double drain	-	Opt	Opt		
Weighing System / Tilting System	-	Opt/No	Opt/No		
SLUICE option	-	No	No		
<b>DOOR</b>					
Height center door / Height door	mm	885/540	885/540		
Diameter	mm	560	560		
<b>POWER</b>					
Motor	kW	6	6		
Electric heating power	kW	21	21		
Total electric power (electric model)	kW	23	22		
Total electric power (hw, steam model)	kW	6	6		
<b>CONNECTIONS</b>		<b>ELECTRIC</b>	<b>STEAM / HOT WATER</b>	<b>ELECTRIC</b>	<b>STEAM / HOT WATER</b>
Tension 230V- I + N + T	N° x mm2 / A	-	-	-	-
Tension 230V - III + T	N° x mm2 / A	3x16+T / 63A	3x4+T / 32A	3x16+T / 63A	3x4+T / 32A
Tension 400V - III + N + T	N° x mm2 / A	4x6+T / 40A	4x2,5+T / 20A	4x6+T / 40A	4x2,5+T / 20A
Steam inlet (Steam mod.)	inch	3/4"		3/4"	
Maximum steam consumption (Steam mod.)	Kg/h	18		18	
Water inlet	inch	3/4"		3/4"	
Water main pressure	Kg/cm <sup>2</sup>	2-4		2-4	
Maximum water consumption	Lit/h	217*/287**		279*/369**	
Drain	inch	3"		3"	
Drainage capacity	Lit/min	200		200	
<b>DIMENSIONS / PACKING DIMENSIONS</b>					
Net Width / Gross Width	mm	1.095/1.165		1.095/1.195	
Net Depth / Gross Depth	mm	1.184/1.230		1.304/1.440	
Net Height / Gross Height	mm	1.598/1920		1.598/1.920	
Net weight / Gross weight	kg	750/820		770/840	
Volume	m <sup>3</sup>	2,75		3,3	

\*ECO program / \*\* Energetic 60°C



- 1- SOAP DISPENSER
- 2- EMERGENCY STOP
- 3- USB PORT
- 4- DRAIN
- 5- ELECTRIC CONNECTION TO LIQUID SOAP PUMPS
- 6- ELECTRICAL CONNECTION
- 7- MAIN SWITCH
- 8- AUXILIAR WATER INLET

- 9- HOT WATER INLET
- 10- EQUIPOTENTIAL CONNECTION
- 11- COLD WATER INLET
- 12- BLUR OUTPUT / WATER OVERLOAD
- 13- LIQUID SOAP CONNECTION
- 14- STEAM CONNECTION
- 15- ETHERNET PORT

		A	B	C	D	E	F	G	H	I	J	K	L	M	N	O	P	Q	R	S	T	U	V	W	X	Y	CGY	CGZ
LA-35C	mm	1.095	1.184	1.600	525	560	158	576	1.330	1.498	1.331	1.513	1.417	61	74	101	596	676	976	808	384	1.028	946	1.496	740	1.558	795	732
LA-45C	mm	1.095	1.304	1.600	525	560	158	576	1.330	1.498	1.331	1.513	1.417	61	74	101	596	676	976	808	384	1.028	946	1.496	740	1.558	795	800





# WASHING

## HIGH SPIN WASHERS HIGH CAPACITY LA-60C/80C TP2



### CHARACTERISTICS

#### TP2

- User friendly and totally programmable 7".
- USB Connection. PC software free of charge for programming, traceability, data analysis.
- Videos on display (ads, instructions)
- 37 languages.
- 8 dosing signals as standard.

#### G FACTOR

- High G-Factor 450.

#### EFFICIENCY

- Intelligent consumption.
- Optimal loading.
- Low water consumption.

#### VERSATILITY

- Electric < > Hot water.
- WET CLEANING features as standard.

#### CONNECTIVITY

- IoT - FagorKonnnect standard
- Remote technical service.
- Management of laundries: OPL.

#### ERGONOMICS

- Big door diameters: Ø 560 mm.
- Easy opening/closing system for door lock.

#### MAINTENANCE

- Equivalent parts for all models: contactors, electronic devices, gear.
- Technical menu: traceability, error diagnosis.

#### OTHERS

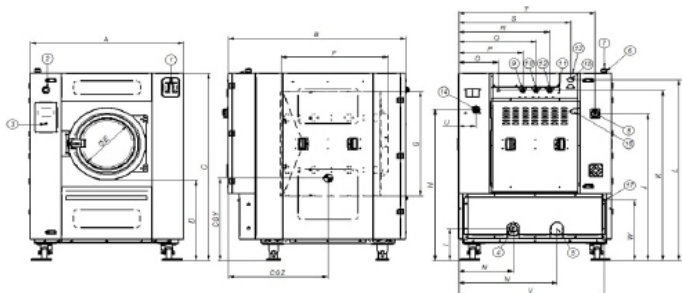
- Drum and tub in stainless steel AISI 304
- 3 water inlets
- Soft mounted, free standing washers.
- Panels in skinplate
- Easy to install, no need of fixation to the floor.
- CB and WRAS approved product. Option ETL
- High spin washers with suspended drum.

#### OPTIONS

- DQ-2 Dosing pump kit
- Extra dosing pump DB-1
- Double drain
- Tropicalized model: protected board
- Tilting options: frontal or double tilt
- Auto Weight: automatic weighing sensor system on feet (Not available with tilting kits)
- Relay card with 6 extra dosing signals: up to 14 signals
- Stainless steel AISI 304 outer casing
- Double heating E+S
- Maritime voltage for electric models: 440V III 50/60 Hz No neutral

	U.	LA-60C TP2	LA-80C TP2		
<b>DRUM</b>					
Load capacity 1:9 / 1:10	Kg	65 / 59	85 / 77		
Volume	l	590	770		
Diameter	mm	1.048	1.048		
Depth	mm	680	892		
<b>GENERAL DETAILS</b>					
Washing speed / Spining speed	r.p.m.	38 / 875	38 / 875		
G Factor	-	450	450		
Maximum force transmitted	KN	18 ±4,2	23 ±4,8		
Frequency-dynamic force	Hz	12,66	12,66		
Noise level	dB	< 70	< 70		
Coin laundry version	-	No	No		
Double drain	-	Opt	Opt		
Weighing system / Tilting system	-	Opt	Opt		
SLUICE option		No	No		
<b>DOOR</b>					
Height door center / door base	mm	1.170 / 810	1.170 / 810		
Diameter	mm	560	560		
<b>POWER</b>					
Motor	kW	15	15		
Electric heating power	kW	36*/24**	48*/36**		
Total electric power (electric model)	kW	39*/27**	51*/39**		
Total electric power (hot water, steam)	kW	15	15		
<b>CONNECTIONS</b>		<b>ELECTRIC</b>	<b>STEAM/HOT WATER</b>	<b>ELECTRIC</b>	<b>STEAM/HOT WATER</b>
Tension 230V - III + T	N° x mm2 / A	3x25+T / 100A	3x10+T / 50A	3x25+T / 100A	3x10+T / 50A
Tension 400V - III + N + T	N° x mm2 / A	4x16+T / 63A	4x10+T / 50A	4x25+T / 80A	4x10+T / 50A
Steam inlet (Steam model)	Inch	3/4"		3/4"	
Max. steam consumption (Steam model)	Kg/h	21		25	
Water inlet	Inch	1"		1"	
Water main pressure	Kgs/cm2	2-4		2-4	
Maximum water consumption	Lit/h	365,8*/483,8**		477,4*/631,4**	
Drain	Inch	3"		3"	
Drainage capacity	Lit/min	200		200	
<b>DIMENSIONS / PACKING DIMENSIONS</b>					
Net Width / Gross Width	mm	1.420 / 1.600		1.420 / 1.600	
Net Depth / Gross Depth	mm	1.433 / 1.595		1.645 / 1.805	
Net Height / Gross Height	mm	1.880 / 1.930		1.880 / 1.930	
Net weight / Gross weight	kg	1.650 / 1.800		1.800 / 2.000	
Volume	m3	4,9		5,6	

\*Electric heating / \*\*Double heating electric+steam  
\*ECO program / \*\* Energetic 60°C



- 1- SOAP DISPENSER
- 2- EMERGENCY STOP
- 3- USB PORT
- 4- DRAIN 1
- 5- DRAIN2
- 6- ELECTRIC CONNECTION TO LIQUID SOAP PUMPS
- 7- ELECTRICAL CONNECTION
- 8- MAIN SWITCH
- 9- AUXILIAR WATER INLET
- 10- HOT WATER INLET
- 11- EQUIPOTENTIAL CONNECTION
- 12- COLD WATER INLET
- 13- STEAM OUTPUT
- 14- LIQUID SOAP CONNECTION
- 15- STEAM CONNECTION
- 16- AIR INTAKE
- 17- ETHERNET PORT

	A	B	C	D	E	F	G	H	I	J	K	L	M	N	O	P	Q	R	S	T	U	V	W	CGY	CGZ
LA-60C	1.420	1.433	1.880	810	560	760	1.050	1.563	323	1.475	1.710	1.817	508	912	367	595	720	845	1.040	1.267	160	1.353	608	830	820
LA-80C	1.420	1.645	1.880	810	560	972	1.050	1.563	323	1.475	1.710	1.817	508	912	367	595	720	720	1.040	1.267	160	1.353	608	830	925



# WASHING

## HIGH SPIN WASHERS HIGH CAPACITY LA-100C/120C TP2



### CHARACTERISTICS

#### TP2

- User friendly and totally programmable 7"
- USB Connection. PC software free of charge for programming, traceability, data analysis
- Videos on display (ads, instructions)
- 37 languages
- 8 dosing signals as standard

#### G FACTOR

- High G-FACTOR 350

#### EFFICIENCY

- Intelligent consumption.
- Optimal loading.
- Water Recovery tanks ready: KRS.
- Low water consumption.

#### VERSATILITY

- Electric < > Hot water.
- Wet cleaning features.

#### CONNECTIVITY

- IoT - FagorKonnnect standard
- Remote technical service.
- Management of laundries: OPL.
- Remote payment.

#### ERGONOMICS

- Biggest door diameters: Ø700
- Easy opening/closing system for door lock.

#### MAINTENANCE

- Equivalent parts for all models: contactors, electronic devices, gear
- Technical menu: traceability, error diagnosis.

#### OTHERS

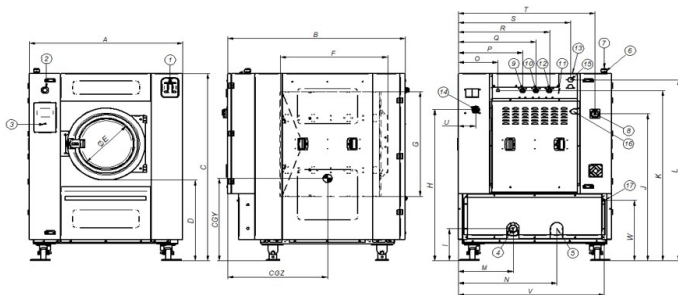
- Drum and tub in stainless steel AISI 304
- 3 water inlets
- Soft mounted, free standing washers.
- Panels in skinplate
- Easy to install, no need of fixation to the floor.
- CB and WRAS approved product. Option ETL
- High spin washers with suspended drum.

#### OPTIONS

- DQ-2 Dosing pump kit
- Extra dosing pump DB-1
- Double drain
- Tropicalized model: protected board
- Tilting options: frontal or double tilt
- Auto Weight: automatic weighing sensor system on feet (Not available with tilting kits)
- Relay card with 6 extra dosing signals: up to 14 signals
- Stainless steel AISI 304 outer casing
- Double heating E+S
- Maritime voltage for electric models: 440V III 50/60 Hz No neutral

	U.	LA-100C	LA-120C		
<b>DRUM</b>					
Load capacity 1:9 / 1:10	Kg	105/95	130/115		
Volume	l	950	1.150		
Diameter	mm	1.360	1.360		
Depth	mm	637	775		
<b>GENERAL DETAILS</b>					
Washing speed / Spinning speed	r.p.m.	34 / 678	34 / 678		
G Factor	-	350	350		
Maximum force transmitted	KN	37,77 ±5,25	37,77 ±5,25		
Frequency-dynamic force	Hz	11,33	11,33		
Noise level	dB	<70	<70		
Coin laundry version	-	No	No		
Double drain	-	Opt	Opt		
Weighing System / Tilting System	-	Opt/Opt	Opt/Opt		
SLUICE option	-	No	No		
<b>DOOR</b>					
Height center door / Height door	mm	1.330/900	1.330/900		
Diameter	mm	700	700		
<b>POWER</b>					
Motor	kW	15	15		
Electric heating power	kW	-	-		
Total electric power (electric model)	kW	-	-		
Total electric power (hw, steam mod.)	kW	15	15		
<b>CONNECTIONS</b>		<b>ELECTRIC</b>	<b>STEAM / HOT WATER</b>	<b>ELECTRIC</b>	<b>STEAM / HOT WATER</b>
Tension 230V - III + T	Nº x mm2 / A	3x16+T / 63A	3x16+T / 63A	3x16+T / 63A	3x16+T / 63A
Tension 400V - III + N + T	Nº x mm2 / A	4X6+T / 40A	4x6+T / 40A	4x6+T / 40A	4x6+T / 40A
Steam inlet (Steam model)	inch	1-1/4"		1-1/4"	
Maximum steam consumption (Steam model)	Kg/h	26,5		26,5	
Water inlet	inch	1-1/2"		1-1/2"	
Water main pressure	Kgs/cm <sup>2</sup>	2-4		2-4	
Maximum water consumption	Lit/h	589*/779**		713*/943**	
Drain	inch	4"		4"	
Drainage capacity	Lit/min	500		500	
<b>DIMENSIONS / PACKING DIMENSIONS</b>					
Net Width / Gross Width	mm	1.836/1.900		1.836/1.900	
Net Depth / Gross Depth	mm	1.649/2.030		1.832/2.030	
Net Height / Gross Height	mm	2.245/2.290		2.245/2.290	
Net weight / Gross weight	kg	3.950/4.100		3.950/4.100	
Volume	m3	8,83		8,83	

\*ECO program / \*\* Energetic 60°C



- 1- SOAP DISPENSER
- 2- EMERGENCY STOP
- 3- USB PORT
- 4- DRAIN 1
- 5- DRAIN2
- 6- ELECTRIC CONNECTION TO LIQUID SOAP PUMPS
- 7- ELECTRICAL CONNECTION
- 8- MAIN SWITCH
- 9- AUXILIAR WATER INLET
- 10- HOT WATER INLET
- 11- EQUIPOTENTIAL CONNECTION
- 12- COLD WATER INLET
- 13- STEAM OUTPUT
- 14- LIQUID SOAP CONNECTION
- 15- STEAM CONNECTION
- 16- AIR INTAKE
- 17- ETHERNET PORT

	A	B	C	D	E	F	G	H	I	J	K	L	M	N	O	P	Q	R	S	T	U	V	W	CGY	CGZ	
LA-100C	mm	1.765	1.650	2.245	945	700	792	1.350	1.740	336	1.781	2.038	2.110	675	1.092	494	634	774	954	994	1.239	1.646	165	2.049	853	1.025
LA-120C	mm	1.765	1.832	2.245	945	700	930	1.350	1.740	336	1.781	2.038	2.110	675	1.092	494	634	774	954	994	1.239	1.646	165	2.049	853	1.130