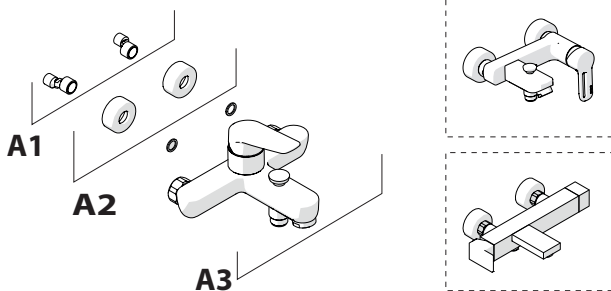


Not included / Non incluso / Non Inclus / Nie zawarty / No incluido / Nao incluido

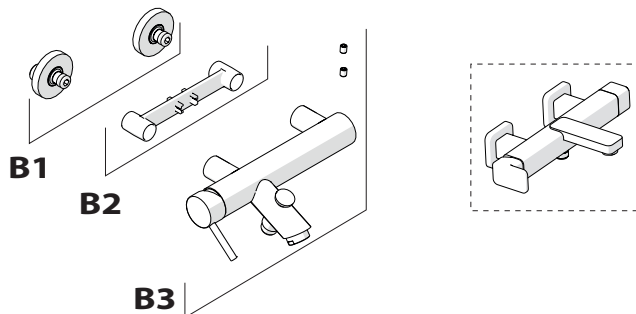
1



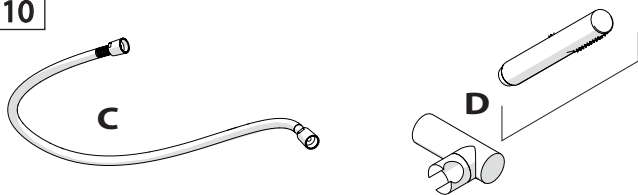
TIPOLOGIA A



TIPOLOGIA B

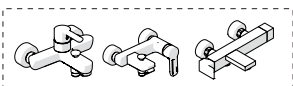


110

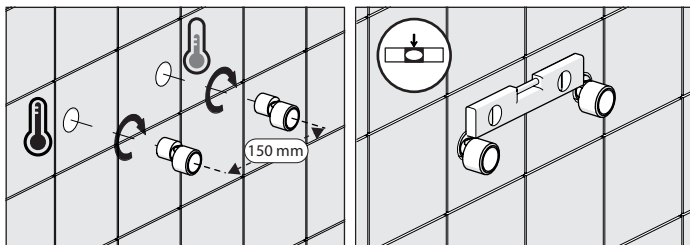


TIPOLOGIA A

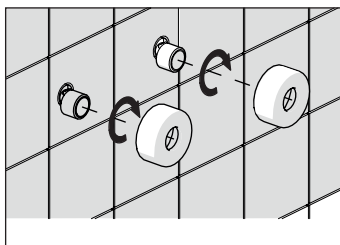
2



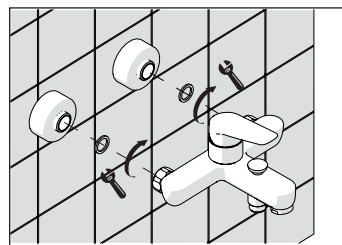
A1



A2

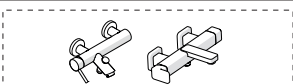


A3

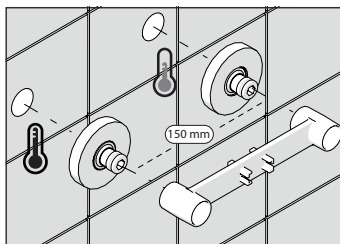


TIPOLOGIA B

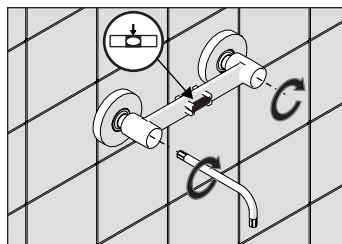
3



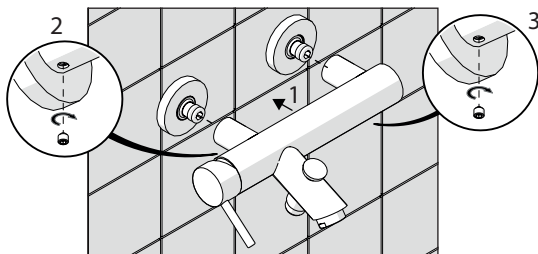
B1



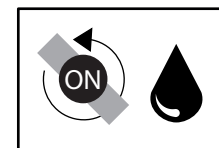
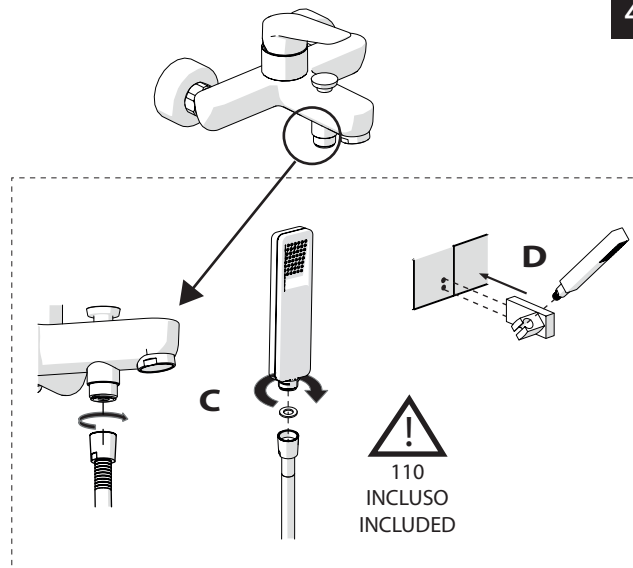
B2



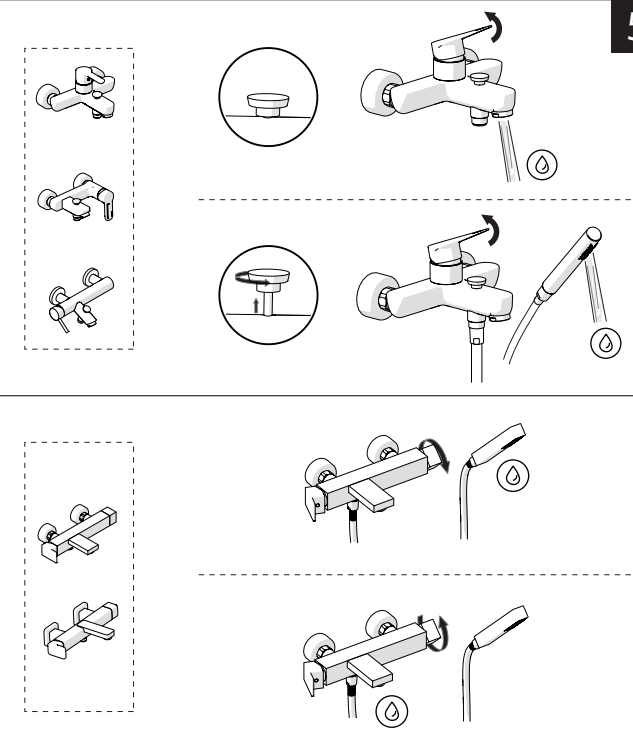
B3



4



5



**-50%**

Dispositivo limitatore "dinamico" della portata d'acqua "50%"

6

"Dinamic" flow rate restrictor "50%"

**ECO**

CLOSE	ON 50%	ON 100%
Posizione di chiusura	Posizione di risparmio acqua "50% portata"	Posizione di apertura totale 100% portata
Closed position	Position of water saving "50% capacity"	100% Fully open flow



Per limitare la temperatura estrarre il limitatore e riposizionarlo nella posizione che si desidera

8

Extract the limiter and put it in correct position to limit temperature

Diagram showing the limiter being inserted into the faucet handle and rotated to different positions (+, 0, -).

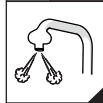
Nessuna limitazione di temperatura	Limitazione parziale di temperatura	Massima limitazione Solo acqua fredda
No limitation of temperature	Partial limitation of temperature	Maximum position Only cold water



7

**!** Rondella silicone  
Silicone Washer

Diagram showing the installation of the silicone washer into the faucet handle. Steps 1-5 are numbered.



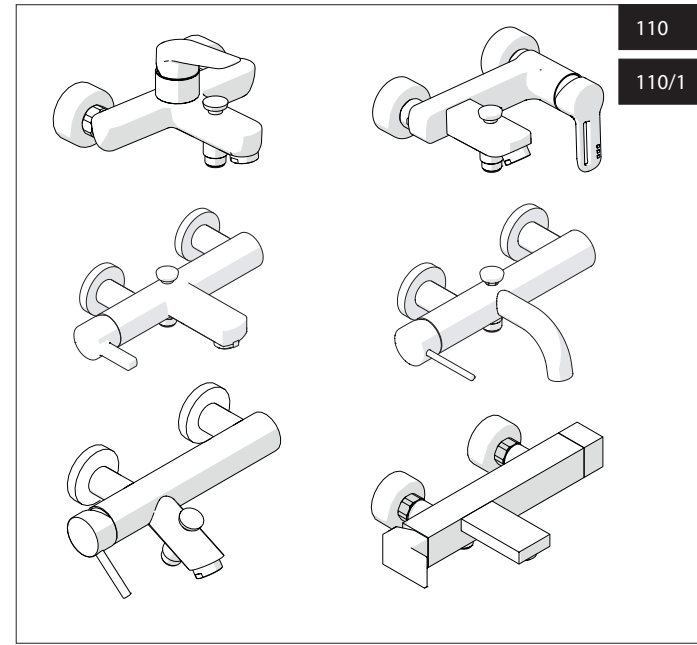
9

Diagram showing the assembly of the faucet handle onto the faucet body.

**NOBILIS**

110

110/1



www.nobili.it

**PRIMA DI INIZIARE / BEFORE STARTING**

	P bar		MAX 10 MIN 0,5		5		T °C		MAX 80 MIN 45
--	-------	--	-------------------	--	---	--	------	--	------------------

**PULIZIA / CLEANING**

	ACQUA WATER		ALCOOL		MICROFIBRA MICROFIBER		SPUGNA SPONGE		DETERGENTI DETERGENT
	TUTTE LE FINITURE ALL FINISHES ACQUA E SAPONE WATER AND SOAP		SI CROMO YES CHROME NO VERNICIATO NO PAINTED NO PVD		ASCIUGARE BENE SEMPRE ALWAYS DRY WELL				

IISTR00110#---STD



REV2.11/2018