



MAGIC

 **Saeco**





Coffee *and* Style

*Magic represents the latest evolution of coffee machines from Saeco Professional.
But it is also a machine that marks a clear break with the past.*

*It has new shapes, completely redesigned, and performance at the top of its category in
terms of quality and variety of beverages.*

*The coffee break becomes from a daily gesture "a way of life" to be lived with style and taste,
a moment of true relaxation to pamper yourself while savouring your favourite drink.*

MAGIC





Details *that* matter

Sophisticated details make Magic a desirable 'must have' for any high-level office.

It is a machine that, for those who love coffee as much as we do, can give you pleasant moments of well-being. A machine that, when not working, becomes a furnishing accessory to be exhibited, which enriches, with a modern and innovative design, any working space.



With Magic, Saeco introduces a new and innovative family of machines that offers advanced performance, combined with modern features and a high level of design.



Verywide range

4

models with elegant and ergonomic aesthetics, enhanced by stylish details such as LED lights and contrasting glossy and matt finishes.

The heart of Magic is a professional variable chamber unit able to hold from 8.5 to 15 g of coffee. The amount of coffee dosed can be adjusted automatically via the menu. The unit has steel conical burrs, which can also be adjusted to obtain your favourite grind setting.

Magic features a new milk frothing system where the milk frother is built into the coffee dispenser. Extremely silent, it emulsifies creamy froth but can also prepare beverages with simple hot milk.



The milk circuit is equipped with a patented cleaning system that guarantees the best efficiency after each preparation.

The 7" colour touch screen provides an easy way for navigating through the menus and a broad range of beverages. The available options also include flat white and double cappuccino, while the beverage recipes can be fully customized to suit your personal taste.

The coffee, milk and water dispensers are installed in a single unit. This makes it easier to position the cups and adjust them in height (from 75 to 160 mm), allowing different kinds of containers to be used.



Specifications



**Magic
M2**



**Magic
M1**



**Magic
B2**



**Magic
B1**

Structural features

Dimensions (w x h x d)	280 x 470 x 481 mm	280 x 435 x 481 mm	280 x 470 x 481 mm	280 x 435 x 481 mm
Weight	14.8 kg	14.3 kg	13.3 kg	12.8 kg
Colour	silver coating on the front, glossy/matt black details on the machine body metallic brown on display frame and coffee spout cover chromed coffee dispensers	black matt effect with glossy details on machine body metallic brown on display frame and coffee spout cover chromed coffee dispensers	black matt effect with glossy details on machine body metallic brown on display frame and coffee spout cover brown coffee dispensers	black matt effect with glossy details on machine body metallic brown on display frame and coffee spout cover brown coffee dispensers

Electrical characteristics

Electrical power supply	230 V/50 Hz	230 V/50 Hz	230 V/50 Hz	230 V/50 Hz
Power consumption	1900 W	1900 W	1300 W	1300 W

Hydraulic features

Hydraulic system	double circuit	double circuit	single circuit	single circuit
Hot water outlet	yes	yes	yes	yes

Water connections

Water supply	autonomous tank	autonomous tank	autonomous tank	autonomous tank
Water supply connection	yes (dedicated version)	no	yes (dedicated version)	no

Capacity

Coffee bean container	1.2 kg	600 g	1.2 kg	600 g
Water container	4 l	2.5 l	4 l	2.5 l
Drip container	2 l	2 l	2 l	2 l
Grounds container (max)	30	30	30	30

Various features

Coffee group variable chamber capacity	8.5 - 15 g	8.5 - 15 g	8.5 - 15 g	8.5 - 15 g
Cappuccinatore	yes	yes	no	no
High Speed Cappuccino	yes	yes	no	no
Coffee grinder	steel conical burrs	steel conical burrs	steel conical burrs	steel conical burrs
Grinding adjustment	manual, 8 levels	manual, 8 levels	manual, 8 levels	manual, 8 levels
Coffee aroma adjustment	electronic from 8.5 to 15 g, 4 steps	electronic from 8.5 to 15 g, 4 steps	electronic from 8.5 to 15 g, 4 steps	electronic from 8.5 to 15 g, 4 steps
Simultaneous dispensing of 2 cups of coffee	yes	yes	yes	yes
Simultaneous dispensing of 2 cups of cappuccino	yes	yes	no	no
Simultaneous dispensing of 2 glasses of latte macchiato	yes	yes	no	no
Height adjustment of coffee/milk dispenser	yes (75-160 mm)	yes (75-160 mm)	yes (75-160 mm)	yes (75-160 mm)
Payment systems	yes MDB and Saeco Pro Up protocol predisposition	yes MDB and Saeco Pro Up protocol predisposition	yes MDB and Saeco Pro Up protocol predisposition	yes MDB and Saeco Pro Up protocol predisposition
Led lights on dispensing area	yes	yes	yes	yes

Interface

Touch screen	yes 7" 1024 x 600 colour	yes 7" 1024 x 600 colour	yes 7" 1024 x 600 colour	yes 7" 1024 x 600 colour
Customizable recipes	yes	yes	yes	yes

MAGIC



MAGIC



Highlights

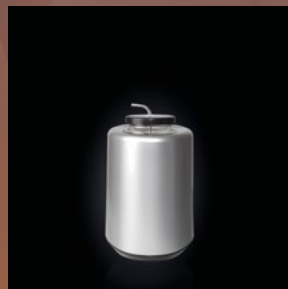
- 8.5 to 15 g variable chamber coffee unit
- 7" touch screen
- Silent built-in milk frother with patented cleaning system
- Combined coffee, milk and water dispenser unit
- Compatible with MDB protocol for payment systems



Accessories



FR7L-N Refrigerator



Milk Cooler



MAGIC



Lifestyle *at* Work

Magic is the ideal tool for every working environment, adaptable from the office to the bed&breakfast, from the congress center to the boutique hotel, and an unfailing presence in companies.

Modern design and cutting-edge technology at the service of taste: a synthesis of the best Saeco quality.

 **Saeco**

follow us

saecoprofessional.com

