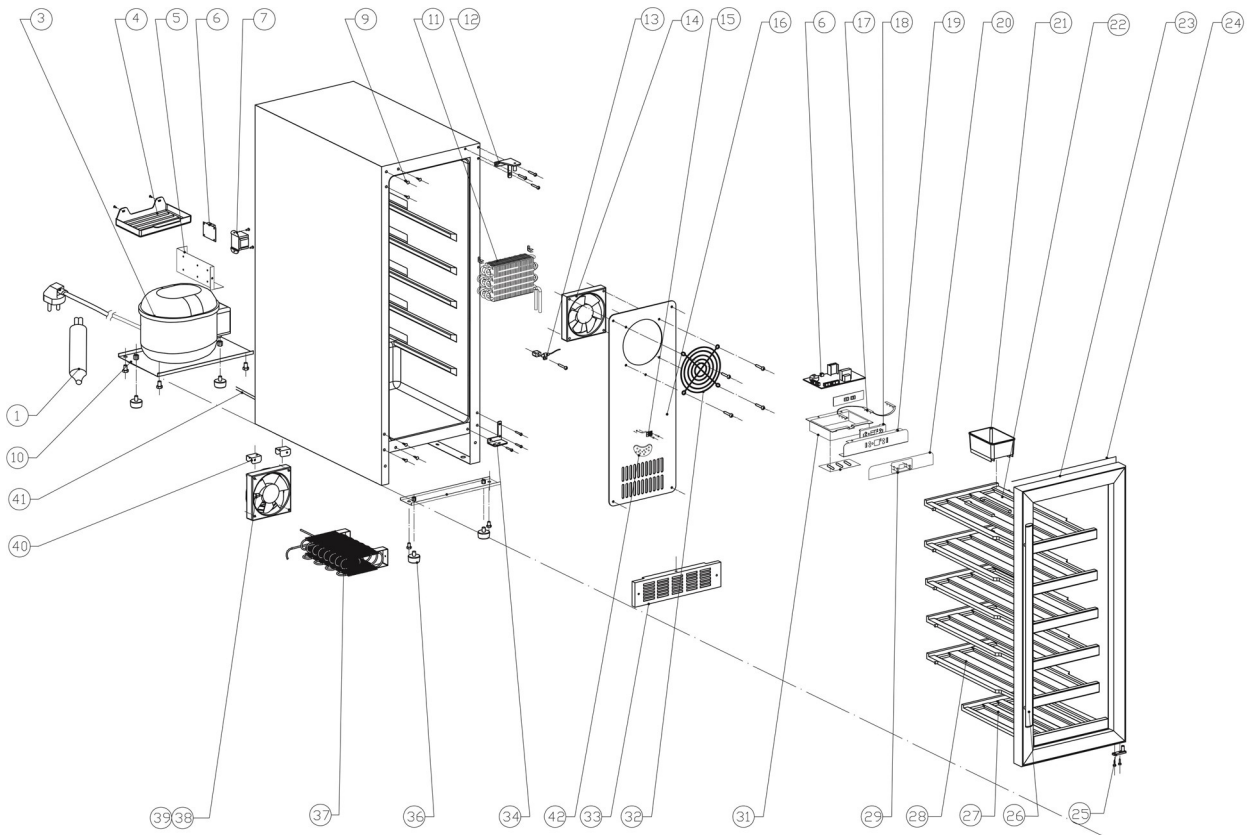


34135 / TFW100-S

Position	ItemNo	Description
01	15703	Filter Drier
03	34773	Wire Clamp
04	11749	Compressor MG1060Y R600A
04.1	34774	Relay
04.2	34775	Overload protect
06	12558	Anti-Vibration Gasket
07	34776	Water tank
08	34777	Electrical box cover
09	13714	Transformer
11	34778	Decorative nail
12	34779	Fixer for evaporator
13	12977	Top Hinge Module Right
14	34780	Evaporator
15	34781	Support post
16	14456	Evaporator Sensor
17	13436	Evaporator Fan Dc1225S
18	34850	Water outlet
19	34782	Air duct board
20	13848	Cover For Sensor
21	13800	Cabinet Sensor
22	13430	Evaporator Fan Cover
23	13876	PCB Board
24	15577	LED Light
25	33636	Electrical Box
26	33635	Display Holder
27	34783	Humid box
28	15253	Wooden Shelf A9A (Top)
29	31368	Glass Door Reversible
29.1	31369	Handle 2020
29.2	34784	Door Gasket
30	34785	Door hinge axis
31	15248	Wooden Shelf (Bottom)
32	15255	Wooden Shelves A9 (Middel)
33	34851	Display panel
34	34786	Button
35	34852	Electrical box cover
36	34787	Seal slice
37	34788	Filter box
37.1	34789	Filter
38	31370	Bottom Grill For Lock
39	10681	Keys
40	34790	Lower hinge right
41	34791	Support bracket of front legs
42	14554	Adjustable Feet
43	34792	Lower hinge left
44	14110	Condenser
45	13363	Condenser Fan Dc1225B
46	13504	Fan Cover
46.1	13430	Evaporator Fan Cover
47	33634	Fan Brackets
48	34793	Air-circulating pipe
99	34794	Top hinge left
99.1	34795	Decorative nail
99.2	31371	Bottom Hinge Axis Left
99.3	31372	Key

34135 / TFW100-S



TEFCOLD®	Date: 201208
Model: TFW80S	Rev. no.: 02
Exploded view	Rev. by: rfj
Drawing no.:	