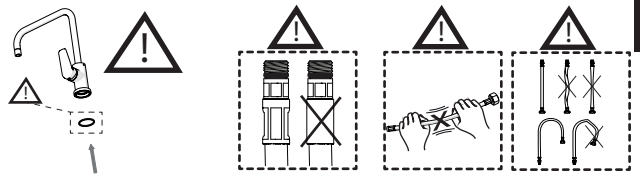
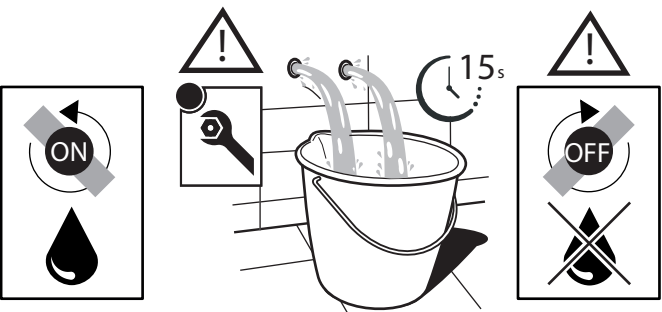
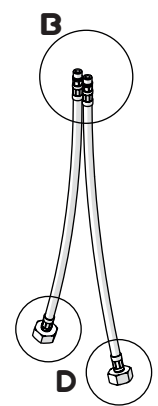
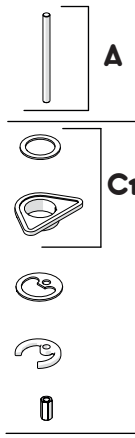
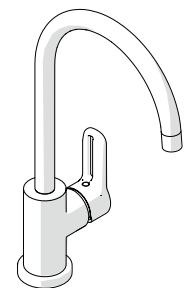
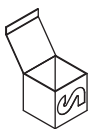
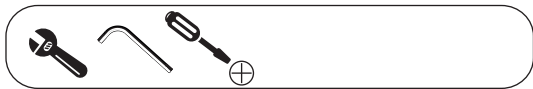
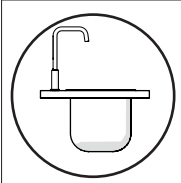
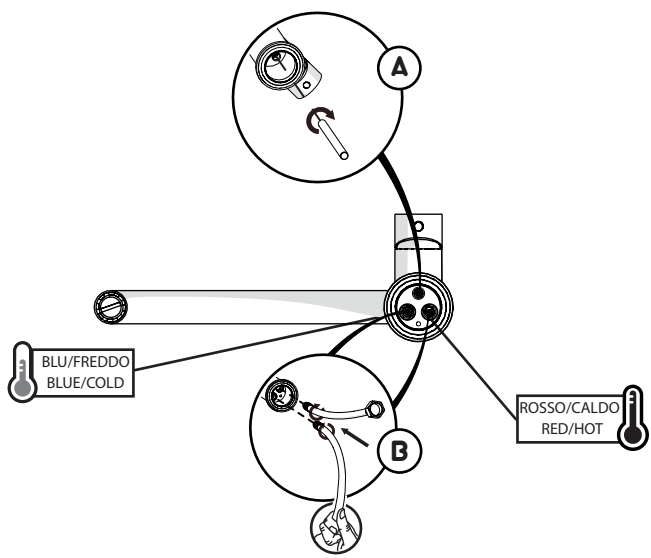


Not included / Non incluso / Non Inclus / Nie zawarty/ No incluido / Nao incluido

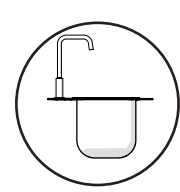
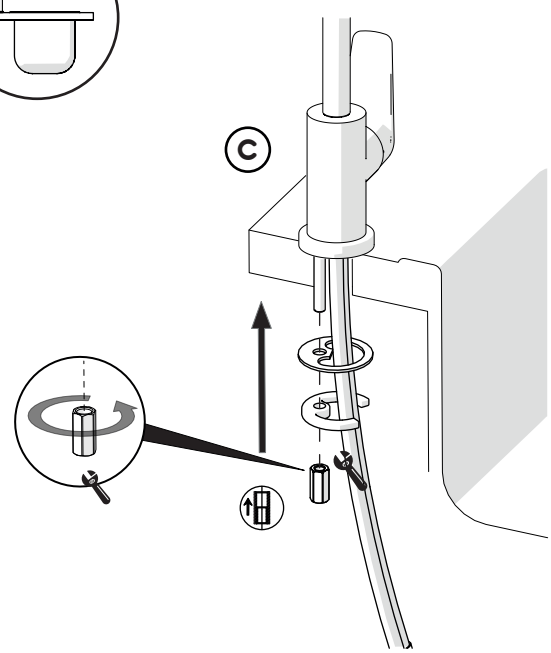
1



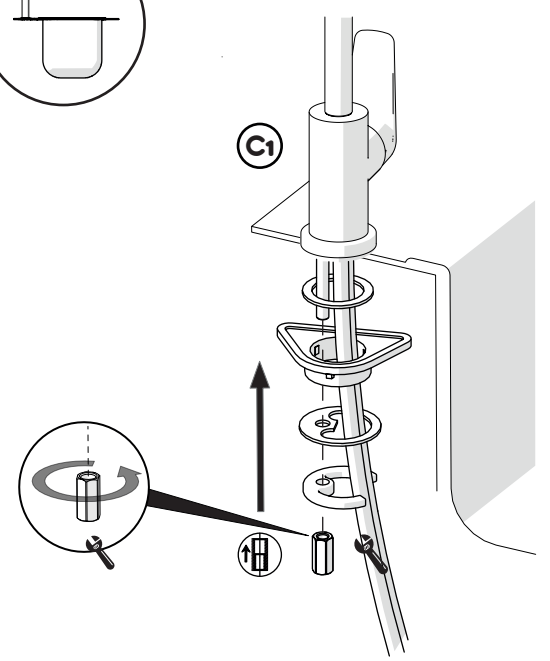
2



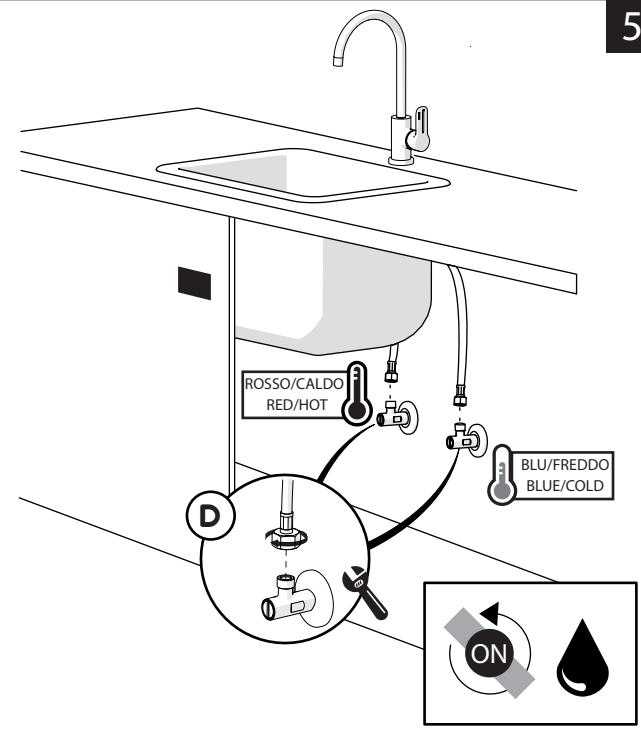
3



4

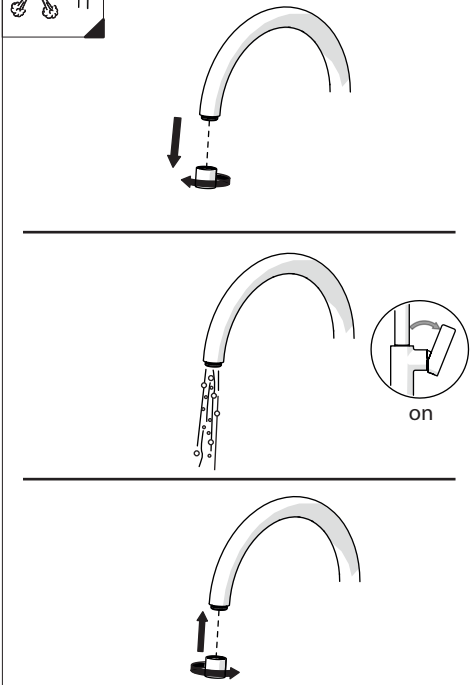
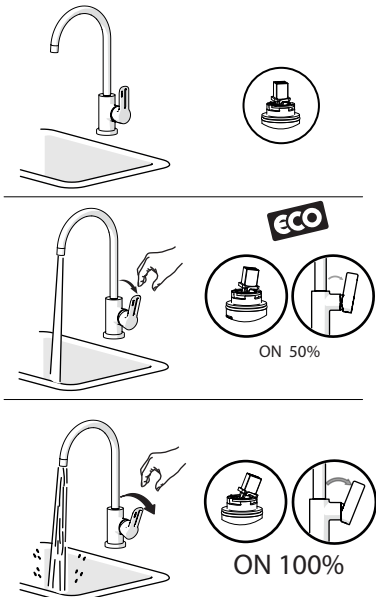


5



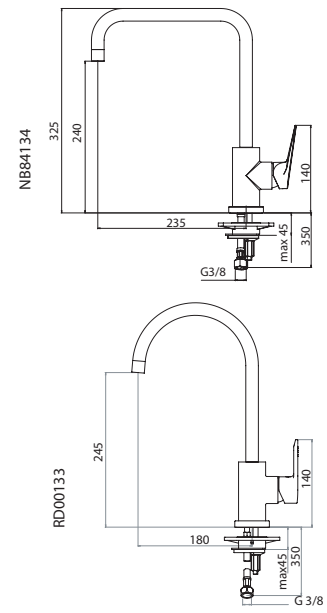
-50%

Dispositivo limitatore "dinamico" della portata d'acqua "50%"
"Dinamic" flow rate restrictor "50%"



ESEMPI DISEGNO TECNICO
EXAMPLES OF TECHNICAL DRAWING

6



NOBILI S

133

134



www.nobili.it

PRIMA DI INIZIARE / BEFORE STARTING

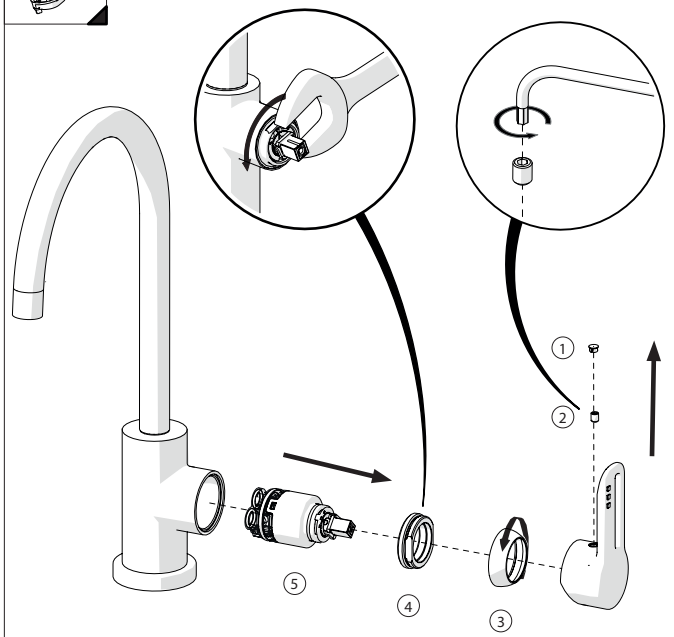
	P	bar	0,5 MIN	MAX 10	5		T	°C	MAX 80	65	45
--	---	-----	---------	--------	---	--	---	----	--------	----	----

PULIZIA / CLEANING

	ACQUA WATER		ALCOOL		MICROFIBRA MICROFIBER		SPUGNA SPONGE		DETERGENTI DETERGENT
SI CROMO YES CHROME NO VERNICIATO NO PAINTED NO PVD									
TUTTE LE FINITURE ALL FINISHES ACQUA E SAPONE WATER AND SOAP				ASCIUGARE BENE SEMPRE ALWAYS DRY WELL					



7



Per limitare la temperatura estrarre il limitatore e riposizionarlo nella posizione che si desidera

8

Extract the limiter and put it in correct position to limit temperature

Nessuna limitazione di temperatura	Limitazione parziale di temperatura	Massima limitazione Solo acqua fredda
No limitation of temperature	Partial limitation of temperature	Maximum position Only cold water

IISTR00133#---STD



REV5.09/2018