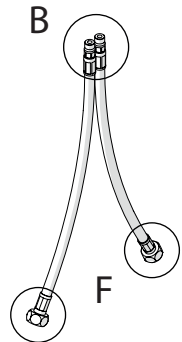
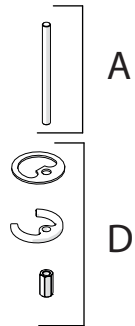
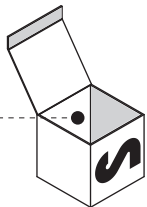
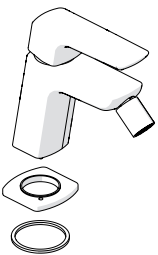
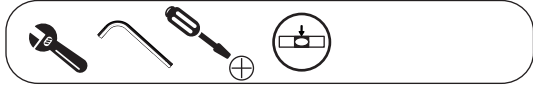
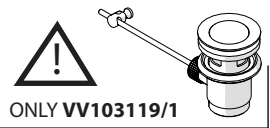
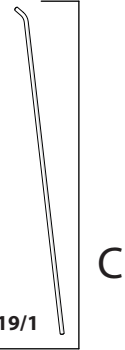
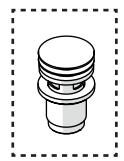


1

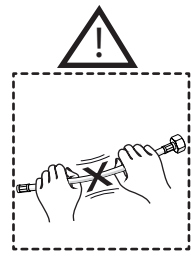
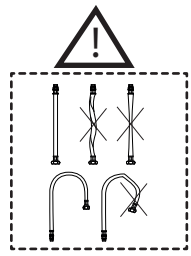
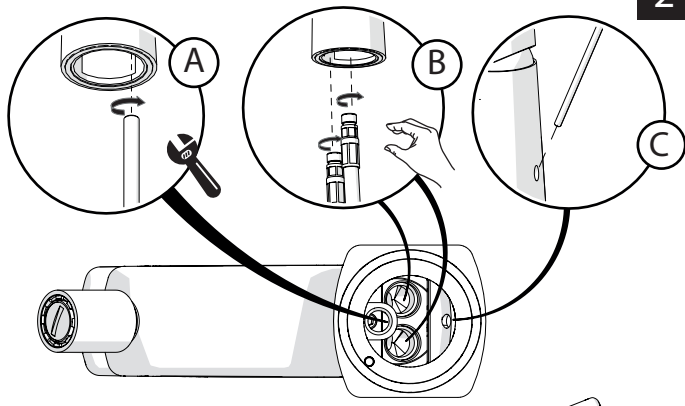
Not included / Non incluso / Non Inclus / Nie zawarty/ No incluido / Nao incluido



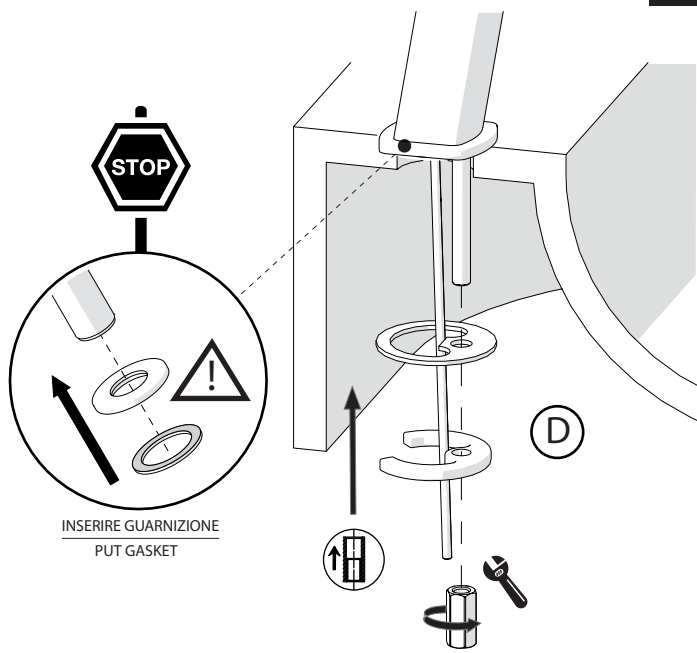
ONLY VV103119/2



2

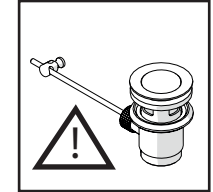


3

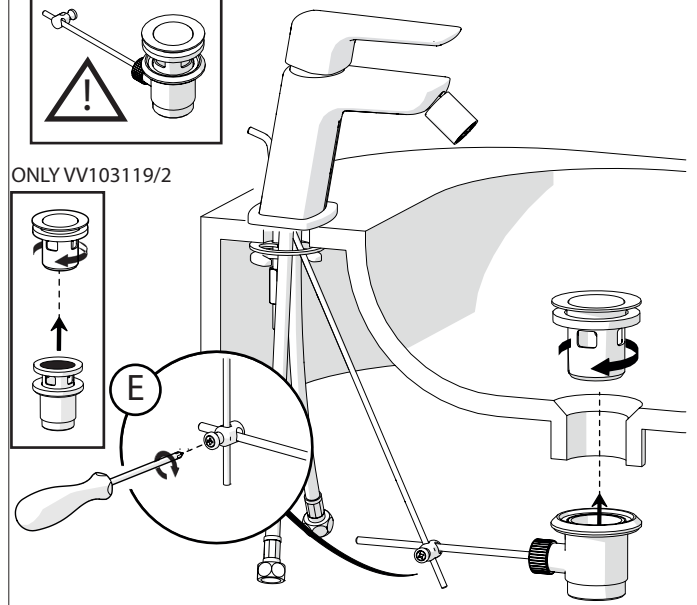
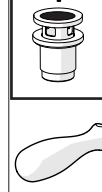
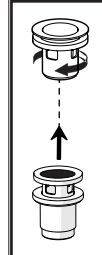


4

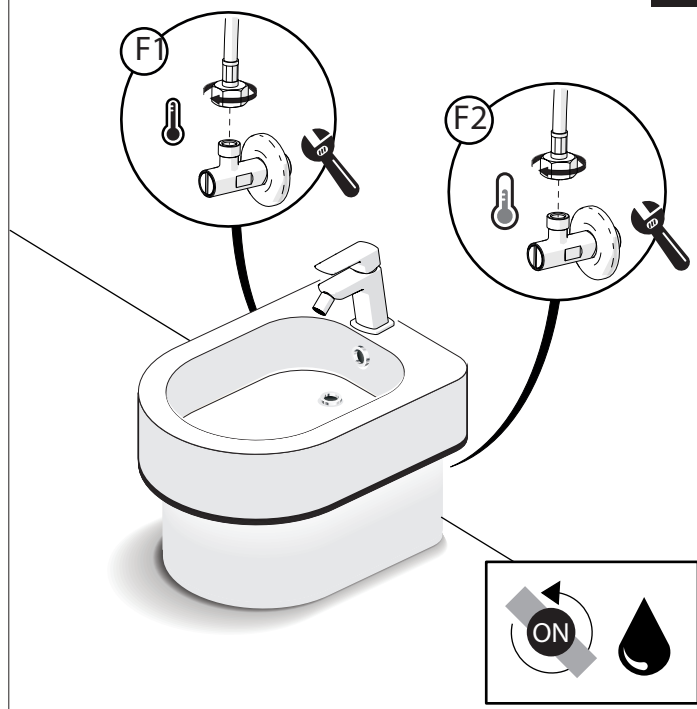
ONLY VV103119/1



ONLY VV103119/2



5



-50%

Dispositivo limitatore "dinamico" della portata d'acqua "50%"

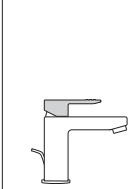
"Dinamic" flow rate restrictor "50%"

CLOSE

ECO

ON 50%

ON 100%



Posizione di chiusura

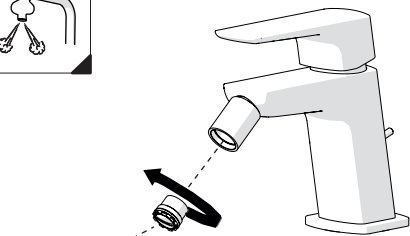
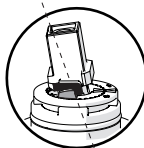
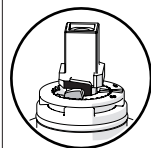
Posizione di risparmio acqua "50% portata"

Posizione di apertura totale 100% portata

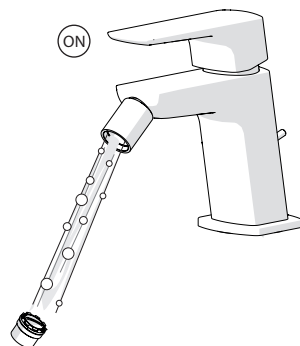
Closed position

Position of water saving "50% capacity"

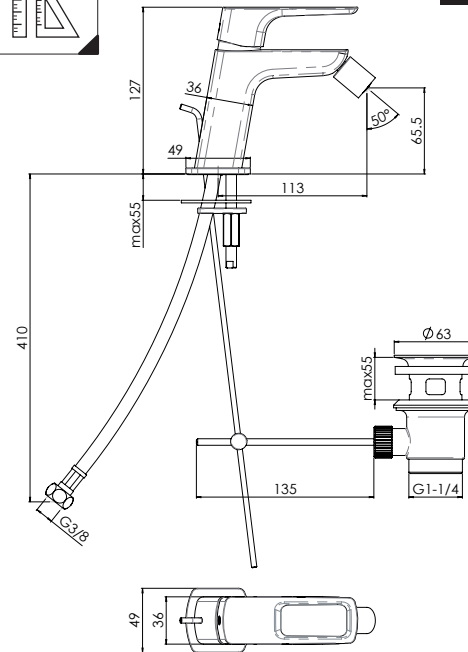
100% Fully open flow



ON



6

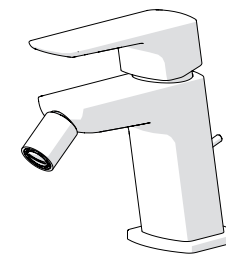


ACQUAVIVA

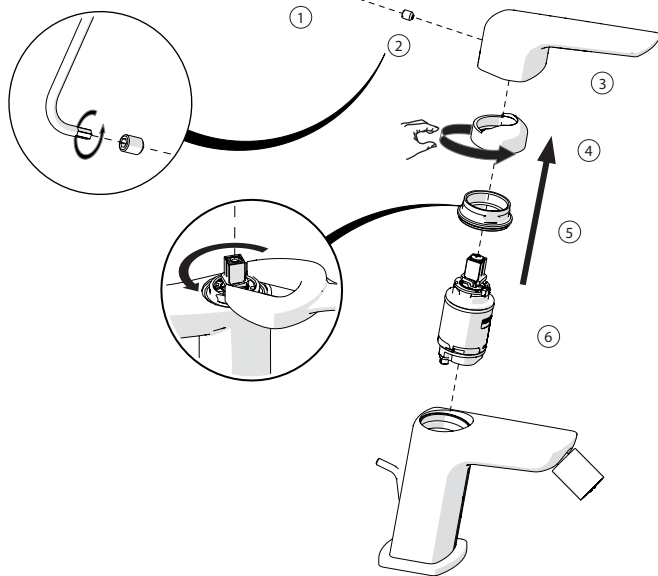
VV103119/1

VV103119/2

VV103119/3



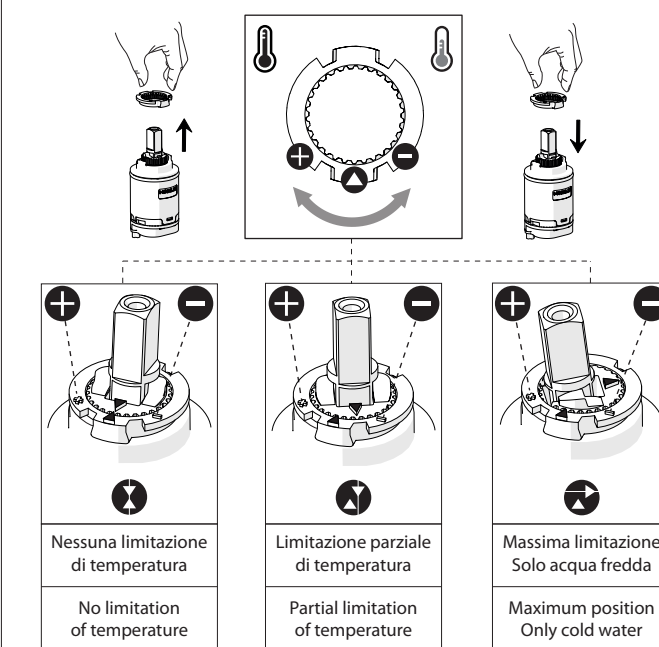
7



Per limitare la temperatura estrarre il limitatore e riposizionarlo nella posizione che si desidera

8

Extract the limiter and put it in correct position to limit temperature

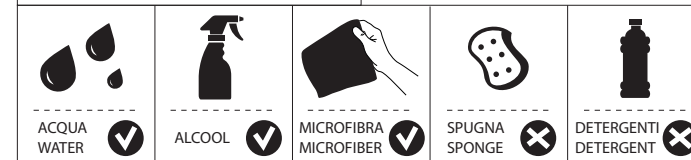


www.grupponobili.it

PRIMA DI INIZIARE / BEFORE STARTING



PULIZIA / CLEANING



IISTRV103119#--STD



REV2.06/2018