

# TOTO

L1616C

Thank you for choosing TOTO product.

You have purchased one of the best sanitary wares available today, backed by TOTO's worldwide finest reputation. With unique and novel designs. Especially with the perfect combination between beauty and specification, TOTO are proud to supply our customers with luxury and user-friendly products. We truly hope all these outstanding quality & first-rate features will bring you the real satisfaction.

## Console LAVATORY

### Specifications

Faucet hole at Console Lavatory

- Faucet hole diameter : Ø35 mm.
- Overflow hole : Ø21 mm
- Product dimension : W600 x L460 x H70 (mm)



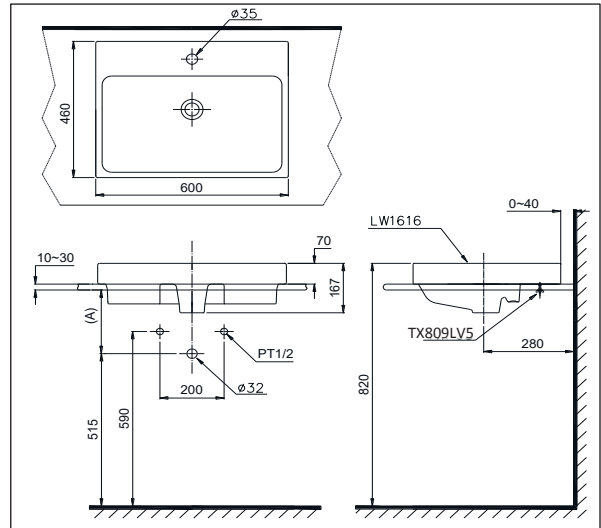
# TOTO

L1616C

### Component Detail

Names of parts	Quantity	Illustration	Remarks
Console Lavatory (L1616C)	1 piece		
Mounting Bolt set (TX809LV5)	1 ST		
Installation manual (Manual, Template)	1 ST		

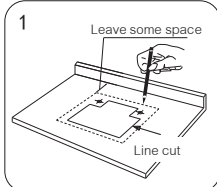
### Drawing Installation



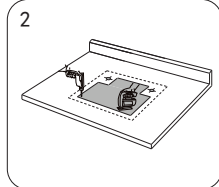
# TOTO

L1616C

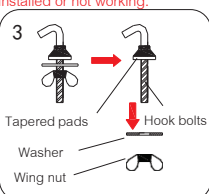
## Process of installation LAVATORY



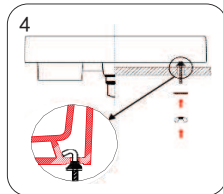
Depending on the installation location to install the sheet-like positioning wash pen wash basins installed along the edges of the sheet-like contour washbasin with mounting holes depicted in the table  
**Warning:** washbasin countertop mounting position should take into account the need to install the faucet size, as too close to the wall, it may lead to the drainage rod can not be installed or not working.



Mounting holes along the contour cutting contour drains and faucet with table size installed properly cut faucet mounting holes  
**WARNING:** wash the outer contour line only as a location positioning wash with, do not cut, cutting losses due to errors caused by my company irresponsible.



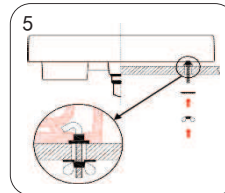
Remove the bolts from inside the product packaging washer and wing nut removed, leaving only the cone-shaped pads on the hook bolts.



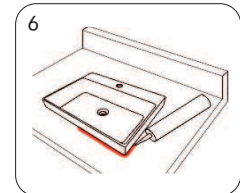
The hook bolts were placed around the mounting hole in the bottom of the wash basins on both sides and adjust the direction of the conical pad in the direction consistent with the mounting holes.

# TOTO

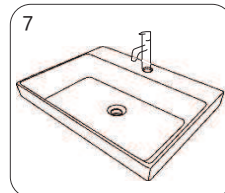
L1616C



The face wash carefully propped up, slowly add the table after the hook bolt mounting holes aligned, and in accordance with the method shown in the table will wash fixed

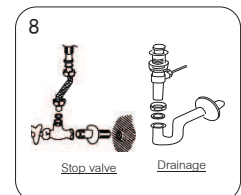


The maximum thickness of the mounting table is 35mm thick countertop will affect the strength of the installation, after installation, use a waterproof sealant around the edge of the wash basins and countertops in contact



Once the sealing material hardens, the leader in accordance with the requirements of the specification on its instructions to install the countertop

**Warning:** Never use epoxy glue loss or hardened larger volume of sealing material, and thus caused the company responsible



Connecting water and drainage pipes

### For more information

Please contact, Tel. 0-2650-9925, 09-2246-5880  
TOTO (THAILAND) CO.LTD 77 Moo 5, Nong Plamor, Nong Khae, Saraburi 18140