

# SET LAUFEN PRO B

## Washbasin 81095.3



### TECHNICAL DATA

Order no.	81095.3
Certified to	EN 31
Dimensions	650 x 500 mm
Inside dimensions of the basin	540 x 320 mm
Specification	Charge 104 – 1 centre tap hole
Special specification	Charge 142 – without tap hole, without overflow and without open drain Charge 156 – 1 centre tap hole, without overflow and without open drain
Weight	16,6 kg
Accessories excl.	Siphon cover, order no. 81995.1 Pedestal, order no. 81995.0
Mounting acc. excl.	Mounting set M10 x 140 mm, order no. 89988.2
Colours	see colour table

### SPECIFICATION TEXT

Washbasin LAUFEN PRO B, sanitary ceramic  
EN 31

dimensions 650 x 500 mm, symmetric

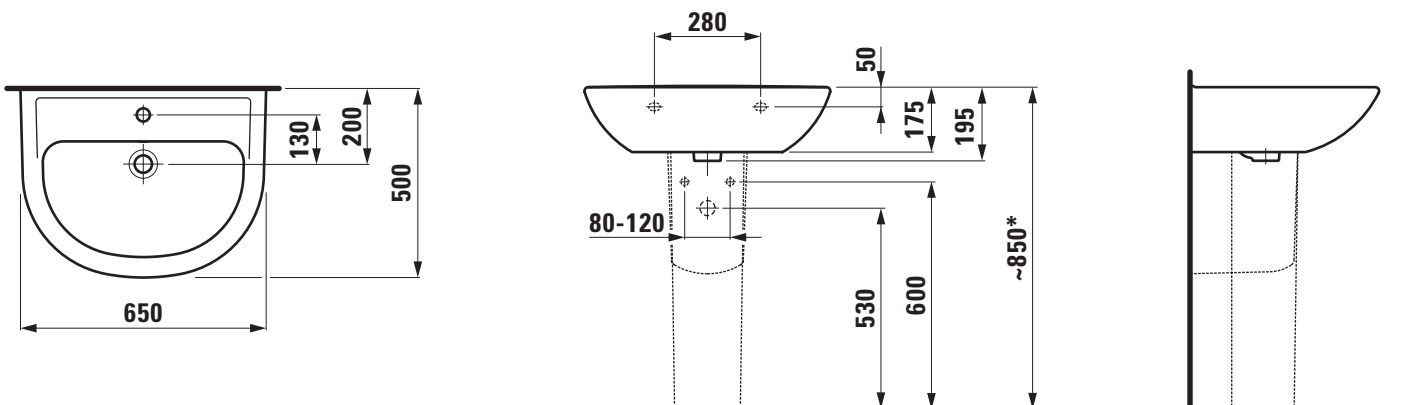
1 centre tap hole

Special feature: overflow channel glazed

Further options / accessories: Surface refinement LCC (only white option 104), without tap hole/overflow and open drain (only white 000), 1 tap hole/without overflow and open drain (only white 000), siphon cover, pedestal, bathtubs, furniture

Order no. 81095.3

### TECHNICAL DRAWINGS / S 1 : 20



\* = Effective height must be fixed according to the height of the pedestal.