

BUVCTTE00000

WC Easy Clean scarico traslato/Easy Clean WC

codice
code



Vaso Build terra Easy Clean con scarico traslato.
Build floor standing Easy Clean WC with adjustable flush system.

bianc lucido/ shiny white

BUVCTTE00000BI

CM 55x36xh36,5

plf Italy pz. 12 - plf export pcs. 20

kg 27

Tecnologie/technologies:



watersaving



easyclean



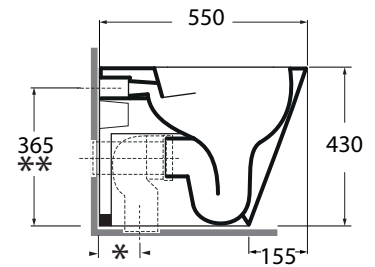
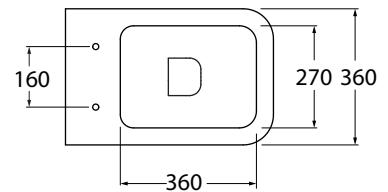
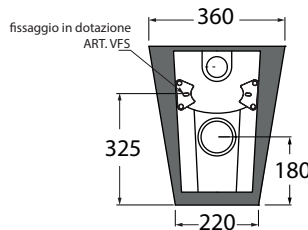
scarico traslato

**

| |
|--------------------|
| RDP |
| mm 380 o mm 350 |

*

| CVT 2 | CVTK | CVTR |
|-----------------------|----------------------|-----------------------|
| da 100 mm a 160 mm | da 60 mm a 130 mm | da 170 mm a 210 mm |

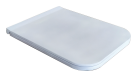


scala/scale 1:20 dimensioni/dimensions in mm

Complementi/complements:

Codice
code

Codice
code



Sedile termoidurente con chiusura frizionata
Thermosetting soft close seat cover

bianco lucido/ shiny white

BUI 1800/F



Curva tecnica per vaso normale e monoblocco
* (solo per questa collezione da 100 a 160 mm)
Technical bend for adjustable flush system wc
with wall distance ranging from 100 mm to 160 mm
(* only for this collection)

CVT 2



Curva tecnica per wc TRASLATO con distanza parete
* (solo per questa collezione da 60 a 130 mm)
Technical bend for adjustable flush system wc with wall
distance ranging from 60 mm to 130 mm
(* only for this collection)

CVTK



Curva tecnica per wc TRASLATO con distanza parete
* (solo per questa collezione da 170 a 210 mm)
Technical bend for adjustable flush system wc
with wall distance ranging from 160 mm to 200 mm
(* only for this collection)

CVTR



Raccordo eccentrico per entrata acqua
* (solo per questa collezione H380 o H350mm)
Eccentric joint for mm H380 or H350mm)
waterinlet (* only for this collection)

RDP

| | | | | |
|---|-----------------------------------|---------------------------|--|-------------------------|
| TECHNICAL SHEET n°: 01 | DESIGNER: OFFICINA AZZURRA | CODE: BUVCTTE00000 | Azzurra sanitari in ceramica S.p.a. | |
| SHEET FORMAT: A4 | ISO | REVISION: 02 | SCALE: 1:20 | DATE: 16/07/2019 |
| REGULATIONS: EN 997 / EN33 / Dop-997 * | | | via Civita Castellana snc 01030 | |
| All the measurements respect the tolerances provided by the "AZZURRA QUALITY GUIDELINES". | | | Castel S.Elia (VT) - ITALY | |
| | | | Tel. +39.0761 518155 | |
| | | | Fax. +39.0761 514560 | |



* Regulations here shown are exclusively referred to ceramic items